

CoraLite® Plus 750-conjugated CD68 Monoclonal antibody

Catalog Number: **CL750-66231**

Basic Information

Catalog Number:

CL750-66231

Size:

1000 µg/ml

Source:

Mouse

Isotype:

IgG1

Immunogen Catalog Number:

AG22815

GenBank Accession Number:

BC015557

GeneID (NCBI):

968

UNIPROT ID:

P34810

Full Name:

CD68 molecule

Calculated MW:

37 kDa

Observed MW:

70-100 kDa

Purification Method:

Protein G purification

CloneNo.:

3A9A7

Recommended Dilutions:

WB 1:500-1:1000

**Excitation/Emission maxima
wavelengths:**

755 nm / 780 nm

Applications

Tested Applications:

WB

Species Specificity:

human, mouse

Positive Controls:

WB : U-937 cells, RAW 264.7 cells

Background Information

CD68 is a type I transmembrane glycoprotein that is highly expressed by human monocytes and tissue macrophages. It belongs to the lysosomal/endosomal-associated membrane glycoprotein (LAMP) family and primarily localizes to lysosomes and endosomes with a smaller fraction circulating to the cell surface. CD68 is also a member of the scavenger receptor family. It may play a role in phagocytic activities of tissue macrophages.

Storage

Storage:

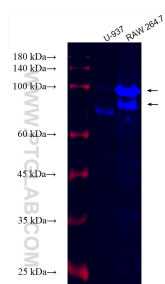
Store at -20°C. Avoid exposure to light. Stable for one year after shipment.

Storage Buffer:

PBS with 50% Glycerol, 0.05% Proclin300, 0.5% BSA, pH 7.3.

Aliquoting is unnecessary for -20°C storage

Selected Validation Data



Various lysates were subjected to SDS PAGE followed by western blot with CL750-66231 (CD68 antibody) at dilution of 1:500 incubated at room temperature for 1.5 hours.