

For Research Use Only

CoraLite® Plus 750-conjugated TLE1 Monoclonal antibody



Catalog Number:CL750-66216

Featured Product

Basic Information

Catalog Number:

CL750-66216

Size:

1000 µg/ml

Source:

Mouse

Isotype:

IgG2b

Immunogen Catalog Number:

AG21327

GenBank Accession Number:

BC010100

GeneID (NCBI):

7088

UNIPROT ID:

Q04724

Full Name:

transducin-like enhancer of split 1
(E(sp1) homolog, Drosophila)

Calculated MW:

83 kDa

Observed MW:

85-95 kDa

Purification Method:

Protein A purification

CloneNo.:

2F2H11

Recommended Dilutions:

WB 1:500-1:1000

Excitation/Emission maxima
wavelengths:

755 nm / 780 nm

Applications

Tested Applications:

WB

Species Specificity:

human

Positive Controls:

WB : Jurkat cells, NIH/3T3 cells

Background Information

TLE1 (Transducin-like enhancer protein 1) is a transcriptional corepressor and binds to a number of transcription factors. It can inhibit NF- κ B-regulated gene expression and the transcriptional activation mediated by FOXA2, and by CTNNB1 and TCF family members in Wnt signaling. The effects of full-length TLE family members may be modulated by association with dominant-negative AES (PMID: 10660609). TLE1 is highly expressed in postnatal brain (PMID: 29758293; 27852056).

Storage

Storage:

Store at -20°C. Avoid exposure to light. Stable for one year after shipment.

Storage Buffer:

PBS with 50% Glycerol, 0.05% Proclin300, 0.5% BSA, pH 7.3.

Aliquoting is unnecessary for -20°C storage

For technical support and original validation data for this product please contact:

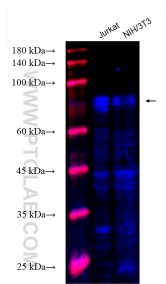
T: 4006900926

E: Proteintech-CN@ptglab.com

W: ptgcn.com

This product is exclusively available under Proteintech Group brand and is not available to purchase from any other manufacturer.

Selected Validation Data



Various lysates were subjected to SDS PAGE followed by western blot with CL750-66216 (TLE1 antibody) at dilution of 1:500 incubated at room temperature for 1.5 hours.