

For Research Use Only

CoraLite® Plus 750-conjugated Alpha Tubulin Monoclonal antibody



Catalog Number: CL750-66031

Basic Information

Catalog Number: CL750-66031	GenBank Accession Number: BC009314	Purification Method: Protein A purification
Size: 1000 µg/ml	GeneID (NCBI): 10376	CloneNo.: 1E4C11
Source: Mouse	UNIPROT ID: P68363	Recommended Dilutions: WB 1:1000-1:8000
Isotype: IgG2b	Full Name: tubulin, alpha 1b	Excitation/Emission maxima wavelengths: 755 nm / 780 nm
Immunogen Catalog Number: AG18034	Calculated MW: 50 kDa	
	Observed MW: 50-55 kDa	

Applications

Tested Applications: WB	Positive Controls: WB : HeLa cells, NIH/3T3 cells, rat brain tissue
Species Specificity: human, rat, mouse	

Background Information

There are five tubulins in human cells: alpha, beta, gamma, delta, and epsilon. Tubulins are conserved across species. They form heterodimers, which multimerize to form a microtubule filament. An alpha and beta tubulin heterodimer is the basic structural unit of microtubules. The heterodimer does not come apart once formed. The alpha and beta tubulins, which are each about 55 kDa MW, are homologous but not identical. Alpha tubulin is useful for scientists across fields as an internal control due to its high, ubiquitous expression pattern. Tubulin expression may vary according to resistance to antimicrobial and antimetabolic drugs. This antibody specifically recognizes Tubulin Alpha.

Storage

Storage:
Store at -20°C. Avoid exposure to light. Stable for one year after shipment.
Storage Buffer:
PBS with 50% Glycerol, 0.05% Proclin300, 0.5% BSA, pH 7.3.
Aliquoting is unnecessary for -20°C storage

For technical support and original validation data for this product please contact:

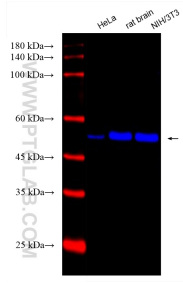
T: 4006900926

E: Proteintech-CN@ptglab.com

W: ptgcn.com

This product is exclusively available under Proteintech Group brand and is not available to purchase from any other manufacturer.

Selected Validation Data



Various lysates were subjected to SDS PAGE followed by western blot with CL750-66031 (Alpha Tubulin antibody) at dilution of 1:4000 incubated at room temperature for 1.5 hours.