

For Research Use Only

CoraLite® Plus 750 Anti-Human CD2 (TS1/8) Mouse IgG2a Recombinant Antibody

Catalog Number: CL750-65565



Basic Information

Catalog Number:

CL750-65565

Concentration:

100 tests, 5 µl/test

Source:

Mouse

Isotype:

IgG2a

GenBank Accession Number:

BC033583

GeneID (NCBI):

914

ENSEMBL Gene ID:

ENSG00000116824

UNIPROT ID:

P06729

Full Name:

CD2 molecule

Calculated MW:

351 aa, 39 kDa

Purification Method:

Protein A purification

CloneNo.:

TS1/8

Recommended Dilutions:

FC: 5 µl per 10⁶ cells in 100 µl suspension

Excitation/Emission maxima wavelengths:

755 nm / 780 nm

Applications

Tested Applications:

FC

Species Specificity:

human

Positive Controls:

FC : human PBMCs,

Background Information

CD2 is a cell surface glycoprotein present on a majority of thymocytes, all mature T cells and subset of NK cells but not on B lymphocytes. It is a pan T-cell marker. CD2 interacts with lymphocyte function-associated antigen (LFA-3/CD58) and CD48/BCM1 to mediate adhesion between T-cells and other cell types. CD2 is implicated in the triggering of T-cells, the cytoplasmic domain is implicated in the signaling function.

Storage

Storage:

Store at 2-8°C. Avoid exposure to light. Stable for one year after shipment.

Storage Buffer:

PBS with 0.09% sodium azide and 0.5% BSA, pH7.3

For technical support and original validation data for this product please contact:

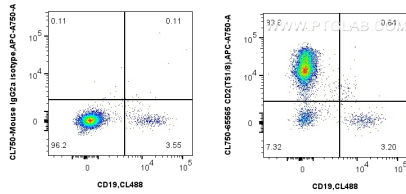
T: 4006900926

E: Proteintech-CN@ptglab.com

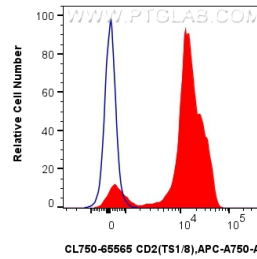
W: ptgcn.com

This product is exclusively available under Proteintech Group brand and is not available to purchase from any other manufacturer.

Selected Validation Data



1x10⁶ human PBMCs were surface stained with CoraLite® Plus 488 Anti-Human CD19 and 5 ul CoraLite® Plus 750 Anti-Human CD2 (TS1/8) Mouse IgG2a Recombinant Antibody (CL750-65565, Clone: TS1/8) (right), or CoraLite® Plus 750 Mouse IgG2a Isotype Control (C1.18.4) (CL750-65208, Clone: C1.18.4) (left). Cells were not fixed. Lymphocytes were gated.



1x10⁶ human PBMCs were surface stained with 5 ul CoraLite® Plus 750 Anti-Human CD2 (TS1/8) Mouse IgG2a Recombinant Antibody (CL750-65565, Clone: TS1/8) (red), or CoraLite® Plus 750 Mouse IgG2a Isotype Control (C1.18.4) (CL750-65208, Clone: C1.18.4) (blue). Cells were not fixed. Lymphocytes were gated.