

For Research Use Only

# CoraLite® Plus 750 Anti-Human HLA-DR (L243) Mouse IgG2a Recombinant Antibody

Catalog Number: CL750-65560

## Basic Information

Catalog Number:

CL750-65560

Concentration:

100 tests, 5 µl/test

Source:

Mouse

Isotype:

IgG2a

GenBank Accession Number:

BC032350

GeneID (NCBI):

3122

ENSEMBL Gene ID:

ENSG00000204287

UNIPROT ID:

P01903

Full Name:

major histocompatibility complex, class II, DR alpha

Calculated MW:

254 aa, 29 kDa

Purification Method:

Protein A purification

CloneNo.:

L243

Recommended Dilutions:

FC: 5 µl per 10<sup>6</sup> cells in 100 µl suspension

Excitation/Emission maxima wavelengths:

755 nm / 780 nm

## Applications

Tested Applications:

FC

Species Specificity:

human, monkey, non-human primates

Positive Controls:

FC : human PBMCs,

## Background Information

HLA-DR is a member of MHC class II molecules encoded by the human leukocyte antigen complex on the region 6p21.31 of chromosome 6. HLA-DR is composed of two non-covalently associated transmembrane glycoproteins (the  $\alpha$  and  $\beta$  chains), and is primarily expressed on B lymphocytes, monocytes, dendritic cells and thymic epithelial cells (PMID: 33125816). HLA-DR participates in the antigen presentation to CD4<sup>+</sup> or CD8<sup>+</sup> T cells and is postulated as a general biomarker of sepsis-induced immunosuppression (PMID: 28199206, 32421903).

## Storage

Storage:

Store at 2-8°C. Avoid exposure to light. Stable for one year after shipment.

Storage Buffer:

PBS with 0.09% sodium azide, pH7.3

For technical support and original validation data for this product please contact:

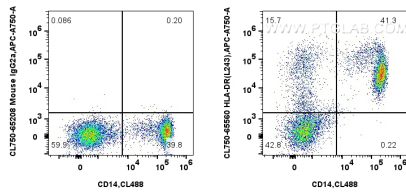
T: 4006900926

E: [Proteintech-CN@ptglab.com](mailto:Proteintech-CN@ptglab.com)

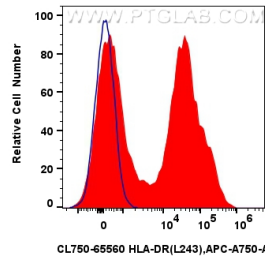
W: [ptgcn.com](http://ptgcn.com)

This product is exclusively available under Proteintech Group brand and is not available to purchase from any other manufacturer.

## Selected Validation Data



1x10<sup>6</sup> human PBMCs were surface stained with CoraLite® Plus 488 Anti-Human CD14 and 5 ul CoraLite® Plus 750 Anti-Human HLA-DR (L243) Mouse IgG2a Recombinant Antibody (CL750-65560, Clone: L243), or CoraLite® Plus 750 Mouse IgG2a Isotype Control (C1.18.4) (CL750-65208, Clone: C1.18.4). Cells were incubated with FC Receptor Block prior to staining. Cells were not fixed.



1x10<sup>6</sup> human PBMCs were surface stained with 5 ul CoraLite® Plus 750 Anti-Human HLA-DR (L243) Mouse IgG2a Recombinant Antibody (CL750-65560, Clone: L243) (red), or CoraLite® Plus 750 Mouse IgG2a Isotype Control (C1.18.4) (CL750-65208, Clone: C1.18.4) (blue). Cells were incubated with FC Receptor Block prior to staining. Cells were not fixed.