

For Research Use Only

CoraLite® Plus 750 Anti-Human CD11a (TS2/4)



Catalog Number: CL750-65194

Basic Information

Catalog Number:

CL750-65194

Size:

100 tests, 5 µl/test

Source:

Mouse

Isotype:

IgG1, kappa

GenBank Accession Number:

BC008777

GeneID (NCBI):

3683

ENSEMBL Gene ID:

ENSG0000005844

UNIPROT ID:

P20701

Full Name:

integrin, alpha L (antigen CD11A (p180), lymphocyte function-associated antigen 1; alpha polypeptide)

Calculated MW:

129 kDa

Purification Method:

Protein G purification

CloneNo.:

TS2/4

Excitation/Emission maxima wavelengths:

755 nm / 780 nm

Applications

Tested Applications:

FC

Species Specificity:

Human

Background Information

CD11a, also known as integrin α L or LFA-1 α , is a 170-180 kDa transmembrane glycoprotein that forms a heterodimer with CD18 (PMID: 7027264; 1672643). CD11a/CD18 (LFA-1) is expressed by all leukocytes and mediates cell adhesion through interactions with its ligands, intercellular adhesion molecule 1 (ICAM-1), ICAM-2, and ICAM-3 (PMID: 7479767). CD11a/CD18 also functions in lymphocyte costimulatory signaling (PMID: 1972160).

Storage

Storage:

Store at 2-8°C. Avoid exposure to light. Stable for one year after shipment.

Storage Buffer:

PBS with 0.09% sodium azide and 0.5% BSA.

For technical support and original validation data for this product please contact:

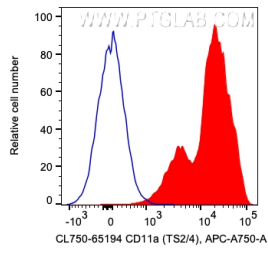
T: 4006900926

E: Proteintech-CN@ptglab.com

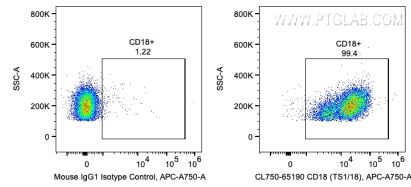
W: ptgcn.com

This product is exclusively available under Proteintech Group brand and is not available to purchase from any other manufacturer.

Selected Validation Data



1X10⁶ human PBMCs were surface stained with 5 ul CoraLite® Plus 750 Anti-Human CD11a (CL750-65194, Clone:TS2/4) or Mouse IgG1 Isotype Control. Cells were not fixed. Lymphocytes were gated.



1X10⁶ human PBMCs were surface stained with 5 ul CoraLite® Plus 750 Anti-Human CD11a (CL750-65194, Clone:TS2/4) or Mouse IgG1 Isotype Control. Cells were not fixed. Lymphocytes were gated.