

For Research Use Only

# CoraLite® Plus 750 Anti-Human CD62L (DREG56)



Catalog Number: CL750-65167

## Basic Information

**Catalog Number:**

CL750-65167

**Size:**

100 tests, 5 ul/test

**Source:**

Mouse

**Isotype:**

IgG1, kappa

**GenBank Accession Number:**

BC020758

**GeneID (NCBI):**

6402

**ENSEMBL Gene ID:**

ENSG00000188404

**UNIPROT ID:**

P14151

**Full Name:**

selectin L

**Calculated MW:**

42 kDa

**Purification Method:**

Purified by protein-A affinity chromatography

**CloneNo.:**

DREG56

**Excitation/Emission maximum wavelengths:**

755 nm / 780 nm

## Applications

**Tested Applications:**

FC

**Species Specificity:**

Human

## Background Information

CD62L, also known as L-selectin or SELL, is a member of the selectin family of adhesion molecules that also include CD62E (E-selectin) and CD62P (P-selectin) (PMID: 2663882, 2473156, 1382078). CD62L is a highly glycosylated protein of 95-105 kDa on neutrophils and 74 kDa on lymphocytes (PMID: 1382078; 1694883, 1695155). CD62L is expressed on the surface of most leukocytes, including lymphocytes, neutrophils, monocytes, eosinophils, hematopoietic progenitor cells, and immature thymocytes (PMID: 1694883, 1688580). It mediates the binding of lymphocytes to high endothelial venules (HEV) of peripheral lymph nodes through interactions with a constitutively expressed ligand, and is also involved in lymphocyte, neutrophil, and monocyte attachment to endothelium at sites of inflammation (PMID: 1382078).

## Storage

**Storage:**

Store at 2-8°C. Avoid exposure to light. Stable for one year after shipment.

**Storage Buffer:**

PBS with 0.09% sodium azide and 0.5% BSA.

For technical support and original validation data for this product please contact:

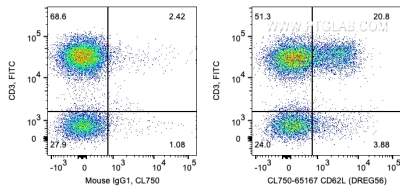
T: 4006900926

E: [Proteintech-CN@ptglab.com](mailto:Proteintech-CN@ptglab.com)

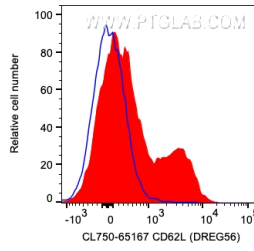
W: [ptgcn.com](http://ptgcn.com)

**This product is exclusively available under Proteintech Group brand and is not available to purchase from any other manufacturer.**

## Selected Validation Data



1X10<sup>6</sup> human PBMCs were surface co-stained with FITC Anti-Human CD3 and 5 ul CoraLite® Plus 750 Anti-Human CD62L (CL750-65167, Clone: DREG56) or Mouse IgG1 Isotype Control. Cells were not fixed. Lymphocytes were gated.



1X10<sup>6</sup> human PBMCs were surface co-stained with FITC Anti-Human CD3 and 5 ul CoraLite® Plus 750 Anti-Human CD62L (CL750-65167, Clone: DREG56) or Mouse IgG1 Isotype Control. Cells were not fixed. CD3<sup>+</sup> Lymphocytes were gated.