

For Research Use Only

CoraLite® Plus 750 Anti-Human CD25/IL-2RA (BC96)

Catalog Number: CL750-65096



Basic Information

Catalog Number:

CL750-65096

Size:

100 tests, 5 ul/test

Source:

Mouse

Isotype:

IgG1, kappa

GenBank Accession Number:

BC156627

GeneID (NCBI):

3559

UNIPROT ID:

P01589

Full Name:

interleukin 2 receptor, alpha

Calculated MW:

272 aa, 31 kDa

Purification Method:

Affinity purification

CloneNo.:

BC96

Excitation/Emission maxima wavelengths:

755 nm / 780 nm

Applications

Tested Applications:

FC

Species Specificity:

human

Background Information

Proliferation of T lymphocytes is triggered by the interaction of IL-2 with its specific receptor following T lymphocyte activation. The receptor for IL-2 has three forms, generated by different combinations of three different proteins, the alpha chain (IL-2R alpha), the beta chain (IL-2R beta), and the gamma chain (IL-2R gamma) (PMID: 8476561). IL-2R alpha (also known as CD25) is a type I transmembrane protein present on activated T cells, activated B cells, some thymocytes, myeloid precursors, and oligodendrocytes. CD25 is also found on natural CD4⁺Foxp3⁺ Treg cells and a subset of human CD4⁺ memory T cells (PMID: 22585674).

Storage

Storage:

Store at 2-8°C. Avoid exposure to light. Stable for one year after shipment.

Storage Buffer:

PBS with 0.09% sodium azide and 0.5% BSA.

For technical support and original validation data for this product please contact:

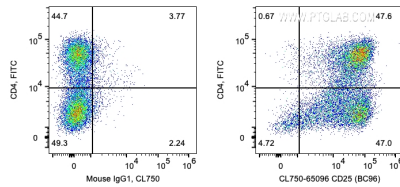
T: 4006900926

E: Proteintech-CN@ptglab.com

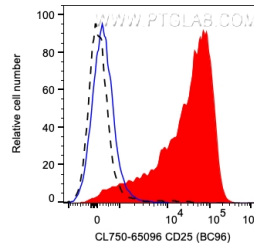
W: ptgcn.com

This product is exclusively available under Proteintech Group brand and is not available to purchase from any other manufacturer.

Selected Validation Data



1X10⁶ PHA treated human PBMCs were surface co-stained with FITC Anti-Human CD4 and 5 ul CoraLite® Plus 750 Anti-Human CD25 (CL750-65096, Clone:BC96) or Mouse IgG1 Isotype Control. Cells were not fixed. Lymphocytes were gated.



1X10⁶ day 3 PHA treated human PBMCs were surface stained with 5 ul CoraLite® Plus 750 Anti-Human CD25 (CL750-65096, Clone: BC96) (red) or Mouse IgG1 Isotype Control (blue). Unactivated PBMCs were surface stained with 5 ul CoraLite® Plus 750 Anti-Human CD25 (black). Cells were not fixed. Lymphocytes were gated.