

For Research Use Only

CoraLite® Plus 750-conjugated CD20 Monoclonal antibody



Catalog Number: CL750-60271

Basic Information

Catalog Number:

CL750-60271

Size:

1000 µg/ml

Source:

Mouse

Isotype:

IgG2b

Immunogen Catalog Number:

AG17309

GenBank Accession Number:

BC002807

GeneID (NCBI):

931

UNIPROT ID:

P11836

Full Name:

membrane-spanning 4-domains,
subfamily A, member 1

Calculated MW:

297 aa, 33 kDa

Observed MW:

35 kDa

Purification Method:

Protein A purification

CloneNo.:

4A7G3

Excitation/Emission maxima
wavelengths:

755 nm / 780 nm

Applications

Tested Applications:

FC (Intra)

Species Specificity:

human

Background Information

CD20 is a 33-37 kDa transmembrane phosphoprotein. CD20 is a B-lymphocyte surface molecule that is widely expressed during B-cell ontogeny, from early pre-B-cell developmental stages until final differentiation into plasma cells. CD20 functions as calcium-permeable cation channel. It is involved in the regulation of B-cell activation and proliferation. CD20 serves as a useful target for antibody-mediated therapeutic depletion of B-cells.

Storage

Storage:

Store at -20°C. Avoid exposure to light. Stable for one year after shipment.

Storage Buffer:

PBS with 50% Glycerol, 0.05% Proclin300, 0.5% BSA, pH 7.3.

Aliquoting is unnecessary for -20°C storage

For technical support and original validation data for this product please contact:

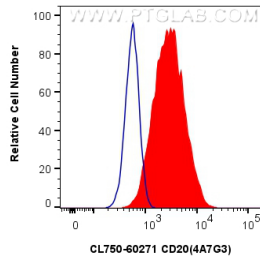
T: 4006900926

E: Proteintech-CN@ptglab.com

W: ptgcn.com

This product is exclusively available under Proteintech Group brand and is not available to purchase from any other manufacturer.

Selected Validation Data



1X10⁶ Daudi cells were intracellularly stained with 0.8 ug CoraLite® Plus 750 Anti-Human CD20 (CL750-60271, Clone: 4A7G3) (red), or 0.8 ug CoraLite® Plus 750 Mouse IgG2b Isotype Control (MPC-11) (CL750-65128, Clone: MPC-11) (blue). Cells were fixed with 4% PFA and permeabilized with Flow Cytometry Perm Buffer (PF00011-C).