

For Research Use Only

CoraLite® Plus 750-conjugated HA tag Polyclonal antibody

Catalog Number: CL750-51064-2



Basic Information

Catalog Number:

CL750-51064-2

Concentration:

1000 ug/ml

Source:

Rabbit

Isotype:

IgG

GenBank Accession Number:

GeneID (NCBI):

Full Name:

Calculated MW:

1 kDa

Purification Method:

Antigen affinity purification

Recommended Dilutions:

WB: 1:1000-1:4000

Excitation/Emission maxima
wavelengths:

755 nm / 780 nm

Applications

Tested Applications:

WB, ELISA

Species Specificity:

recombinant protein

Positive Controls:

WB : Transfected HEK-293 cells,

Background Information

Protein tags are protein or peptide sequences located either on the C- or N- terminal of the target protein, which facilitates one or several of the following characteristics: solubility, detection, purification, localization and expression. The HA tag is corresponds to amino acid residues YPYDVPDYA of human influenza virus hemagglutinin(HA). Many recombinant proteins have been engineered to express the HA tag, which does not appear to interfere with the bioactivity or the biodistribution of the recombinant protein. This tag facilitates the detection, isolation, and purification of the proteins. The HA tag is useful in western blotting and immunohistochemical localization of expressed fusion proteins when examined with antibodies raised specifically against the HA-tag.

Storage

Storage:

Store at -20°C. Avoid exposure to light. Stable for one year after shipment.

Storage Buffer:

PBS with 50% glycerol, 0.05% Proclin300, 0.5% BSA, pH7.3

Aliquoting is unnecessary for -20°C storage

For technical support and original validation data for this product please contact:

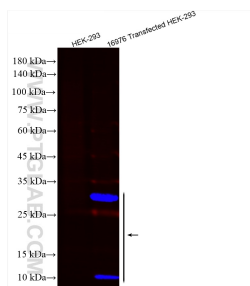
T: 4006900926

E: Proteintech-CN@ptglab.com

W: ptgcn.com

This product is exclusively available under Proteintech Group brand and is not available to purchase from any other manufacturer.

Selected Validation Data



Transfected HEK-293 cells were subjected to SDS PAGE followed by western blot with CL750-51064-2 (HA tag antibody) at dilution of 1:2000 incubated at room temperature for 1.5 hours.