

For Research Use Only

CoraLite®700 Anti-Human CD206 Rabbit Recombinant Antibody

Catalog Number:CL700-98458-3



Basic Information

Catalog Number:

CL700-98458-3

Concentration:

100tests, 5 ul/test

Source:

Rabbit

Isotype:

IgG

Immunogen Catalog Number:

EG2428

GenBank Accession Number:

NM_002438.4

GeneID (NCBI):

4360

UNIPROT ID:

P22897-1

Full Name:

mannose receptor, C type 1

Calculated MW:

166 kDa

Purification Method:

Protein A purification

CloneNo.:

250381C1

Recommended Dilutions:

FC: 5 ul per 10⁶ cells in a 100 µl suspension

Excitation/Emission maxima wavelengths:

702 nm / 723 nm

Applications

Tested Applications:

FC

Species Specificity:

human

Positive Controls:

FC : GM-CSF, IL-4 and IL-10 treated human PBMCs,

Background Information

CD206, also named as MMR, CLEC13D and MRC1, is a type I membrane receptor that mediates the endocytosis of glycoproteins by macrophages. CD206 has been shown to bind high-mannose structures on the surface of potentially pathogenic viruses, bacteria, and fungi so that they can be neutralized by phagocytic engulfment. CD206 is a 170 kDa transmembrane protein which contains 5 domains: an amino-terminal cysteine-rich region, a fibronectin type II repeat, a series of eight tandem lectin-like carbohydrate recognition domains (responsible for the recognition of mannose and fucose), a transmembrane domain, and an intracellular carboxy-terminal tail. It is expressed on most tissue macrophages, in vitro derived dendritic cells, lymphatic and sinusoidal endothelia.

Storage

Storage:

Store at 2-8°C. Avoid exposure to light. Stable for one year after shipment.

Storage Buffer:

PBS with 0.09% sodium azide and 0.5% BSA, pH7.3

For technical support and original validation data for this product please contact:

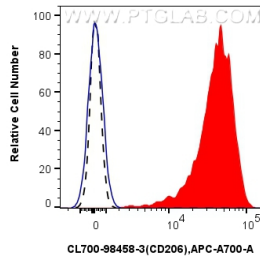
T: 4006900926

E: Proteintech-CN@ptglab.com

W: ptgcn.com

This product is exclusively available under Proteintech Group brand and is not available to purchase from any other manufacturer.

Selected Validation Data



1x10⁶ GM-CSF, IL-4 and IL-10 treated human PBMCs were surface stained with 5 ul CoraLite®700 Anti-Human CD206 Rabbit RecAb (CL700-98458-3, Clone: 250381C1) (red) or CoraLite®700 Rabbit IgG Isotype Control Recombinant Antibody (CL700-98136, Clone: 240953C9) (blue). 1x10⁶ untreated human PBMCs were surface stained with 5 ul CoraLite®700 Anti-Human CD206 Rabbit RecAb (CL700-98458-3, Clone: 250381C1) (black, dashed). Cells were not fixed.

