

For Research Use Only



CoraLite®700 Anti-Mouse SIRP Alpha/CD172a Rabbit Recombinant Antibody

Catalog Number:CL700-98225

Basic Information

Catalog Number: CL700-98225	GenBank Accession Number: NM_007547.4	Purification Method: Protein A purification
Concentration: 100ug, 500 ug/ml	GeneID (NCBI): 19261	CloneNo.: 241794D9
Source: Rabbit	UNIPROT ID: P97797-2	Recommended Dilutions: FC: 0.25 ug per 10 ⁶ cells in a 100 µl suspension
Isotype: IgG	Full Name: signal-regulatory protein alpha	Excitation/Emission maxima wavelengths: 702 nm / 723 nm
Immunogen Catalog Number: EG1520	Calculated MW: 56 kDa	

Applications

Tested Applications: FC	Positive Controls: FC : mouse bone marrow cells,
Species Specificity: mouse	

Background Information

SIRP Alpha, also known as CD172a, SHPS-1, and BIT, belongs to the SIRP family. SIRP Alpha is a transmembrane glycoprotein expressed explicitly on myeloid cells and provides a "do not eat me" signal after engaging with integrin-associated protein CD47 on tumor cells (PMID: 36419386). SIRP Alpha shows heterogeneity in molecular weight (~65-120 kDa) in various tissues due to differential glycosylation (PMID: 18051954).

Storage

Storage:
Store at 2-8°C. Avoid exposure to light. Stable for one year after shipment.
Storage Buffer:
PBS with 0.09% sodium azide, pH7.3

For technical support and original validation data for this product please contact:

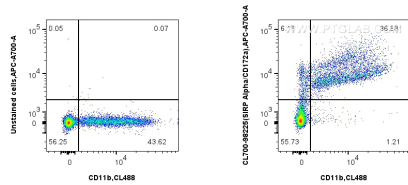
T: 4006900926

E: Proteintech-CN@ptglab.com

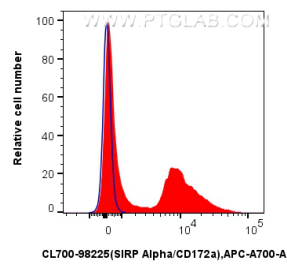
W: ptgcn.com

This product is exclusively available under Proteintech Group brand and is not available to purchase from any other manufacturer.

Selected Validation Data



1x10⁶ mouse bone marrow cells were surface stained with CoraLite® Plus 488 Anti-Mouse CD11b (M1/70) (CL488-65055, Clone: M1/70), and 0.25 ug CoraLite®700 Anti-Mouse SIRP Alpha/CD172a Rabbit RecAb (CL700-98225, Clone: 241794D9) or Rabbit IgG Isotype Control RecAb (98136-1-RR, Clone: 240953C9). Cells were not fixed.



1x10⁶ mouse bone marrow cells were surface stained with 0.25 ug CoraLite®700 Anti-Mouse SIRP Alpha/CD172a Rabbit RecAb (CL700-98225, Clone: 241794D9) (red) or Rabbit IgG Isotype Control RecAb (98136-1-RR, Clone: 240953C9) (blue). Cells were not fixed.