

For Research Use Only

# CoraLite®700 Anti-Human CD45RA (F8-11-13) Mouse IgG2a Recombinant Antibody

Catalog Number: CL700-65590



## Basic Information

Catalog Number:

CL700-65590

Concentration:

100tests, 5 ul/test

Source:

Mouse

Isotype:

IgG2a

GenBank Accession Number:

BC014239

GeneID (NCBI):

5788

ENSEMBL Gene ID:

ENSG00000081237

UNIPROT ID:

P08575

Full Name:

protein tyrosine phosphatase,  
receptor type, C

Calculated MW:

1304 aa, 147 kDa

Purification Method:

Protein A purification

CloneNo.:

F8-11-13

Recommended Dilutions:

FC: 5 ul per 10<sup>6</sup> cells in a 100 µl  
suspension

Excitation/Emission maxima  
wavelengths:

702 nm / 723 nm

## Applications

Tested Applications:

FC

Species Specificity:

human

Positive Controls:

FC : human PBMCs,

## Background Information

CD45, also known as protein tyrosine phosphatase, receptor type C, is a type I transmembrane protein expressed on the surface of all haematopoietic cells with the exception of erythrocytes and platelets (PMID: 3489673; 28615666). CD45 is a pan-haematopoietic cell marker and has been shown to be essential for T- and B-cell activation and signalling (PMID: 9429890; 16378097). CD45 exists as multiple isoforms due to alternative splicing of three exons (4, 5, and 6, designated A, B, and C) in the extracellular domain (PMID: 12414720). CD45RA is expressed on naïve T cells, B cells, and monocytes (PMID: 1830500; 14687231).

## Storage

Storage:

Store at 2-8°C. Avoid exposure to light. Stable for one year after shipment.

Storage Buffer:

PBS with 0.09% sodium azide and 0.5% BSA, pH7.3

For technical support and original validation data for this product please contact:

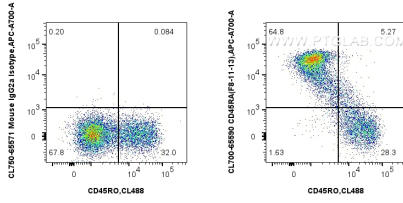
T: 4006900926

E: Proteintech-CN@ptglab.com

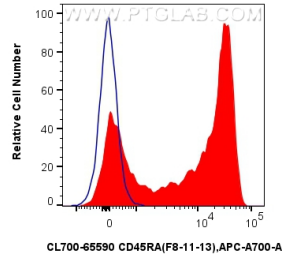
W: ptgcn.com

This product is exclusively available under Proteintech Group brand and is not available to purchase from any other manufacturer.

## Selected Validation Data



1x10<sup>6</sup> human PBMCs were surface stained with CoraLite® Plus 488 Anti-Human CD45RO, and 5 ul CoraLite®700 Anti-Human CD45RA (F8-11-13) Mouse IgG2a RecAb (CL700-65590, Clone: F8-11-13) or CoraLite®700 Mouse IgG2a Isotype Control (MOPC-173) Recombinant Antibody (CL700-65571, Clone: MOPC-173). Cells were not fixed. Lymphocytes were gated.



1x10<sup>6</sup> human PBMCs were surface stained with 5 ul CoraLite®700 Anti-Human CD45RA (F8-11-13) Mouse IgG2a RecAb (CL700-65590, Clone: F8-11-13) (red) or CoraLite®700 Mouse IgG2a Isotype Control (MOPC-173) Recombinant Antibody (CL700-65571, Clone: MOPC-173) (blue). Cells were not fixed. Lymphocytes were gated.