

For Research Use Only

CoraLite®700 Anti-Human HLA-DR (L243) Mouse IgG2a Recombinant Antibody

Catalog Number: CL700-65560



Basic Information

Catalog Number:

CL700-65560

Concentration:

100 tests, 5 µl/test

Source:

Mouse

Isotype:

IgG2a

GenBank Accession Number:

BC032350

GeneID (NCBI):

3122

ENSEMBL Gene ID:

ENSG00000204287

UNIPROT ID:

P01903

Full Name:

major histocompatibility complex, class II, DR alpha

Calculated MW:

254 aa, 29 kDa

Purification Method:

Protein A purification

CloneNo.:

L243

Recommended Dilutions:

FC: 5 µl per 10⁶ cells in a 100 µl suspension

Excitation/Emission maxima wavelengths:

702 nm / 723 nm

Applications

Tested Applications:

FC

Species Specificity:

human

Positive Controls:

FC : human PBMCs,

Background Information

HLA-DR is a member of MHC class II molecules encoded by the human leukocyte antigen complex on the region 6p21.31 of chromosome 6. HLA-DR is composed of two non-covalently associated transmembrane glycoproteins (the α and β chains), and is primarily expressed on B lymphocytes, monocytes, dendritic cells and thymic epithelial cells (PMID: 33125816). HLA-DR participates in the antigen presentation to CD4⁺ or CD8⁺ T cells and is postulated as a general biomarker of sepsis-induced immunosuppression (PMID: 28199206, 32421903).

Storage

Storage:

Store at 2-8°C. Avoid exposure to light. Stable for one year after shipment.

Storage Buffer:

PBS with 0.09% sodium azide and 0.5% BSA, pH7.3

For technical support and original validation data for this product please contact:

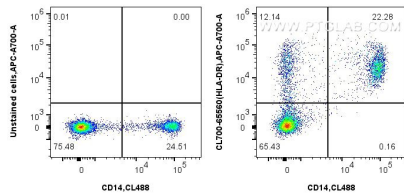
T: 4006900926

E: Proteintech-CN@ptglab.com

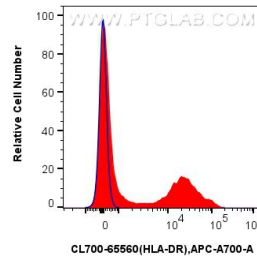
W: ptgcn.com

This product is exclusively available under Proteintech Group brand and is not available to purchase from any other manufacturer.

Selected Validation Data



1x10⁶ human PBMCs were surface stained with CoraLite® Plus 488 Anti-Human CD14 Rabbit Recombinant Antibody (CL488-98040, Clone: 230332D7), and 5 ul CoraLite®700 Anti-Human HLA-DR (L243) Mouse IgG2a RecAb (CL700-65560, Clone: L243) or unstained. Cells were incubated with FC Receptor Block prior to staining. Cells were not fixed.



1x10⁶ human PBMCs were surface stained with 5 ul CoraLite®700 Anti-Human HLA-DR (L243) Mouse IgG2a RecAb (CL700-65560, Clone: L243) (red) or unstained (blue). Cells were incubated with FC Receptor Block prior to staining. Cells were not fixed.