

For Research Use Only

# FcZero-rAb® CoraLite® Plus 647 Anti-Human ICAM-2/CD102 Rabbit Recombinant Antibody

Catalog Number: CL647-FcA98367



## Basic Information

Catalog Number:

CL647-FcA98367

Concentration:

100tests, 5 ul/test

Source:

Rabbit

Isotype:

IgG

Immunogen Catalog Number:

EG2002

GenBank Accession Number:

NM\_001099789.2

GeneID (NCBI):

3384

UNIPROT ID:

P13598

Full Name:

intercellular adhesion molecule 2

Calculated MW:

31kDa

Purification Method:

Protein A purification

CloneNo.:

242237F8

Recommended Dilutions:

FC: 5 ul per 10<sup>6</sup> cells in a 100 µl suspension

Excitation/Emission maxima wavelengths:

654 nm / 674 nm

## Applications

Tested Applications:

FC

Species Specificity:

human

Positive Controls:

FC : human PBMCs,

## Background Information

ICAM2 is a cell adhesion protein having important roles in cell migration, especially during inflammation when leukocytes cross the endothelium. Initially described as a receptor for lymphocyte function-associated antigen-1 (LFA1), ICAM2 may play a role in lymphocyte recirculation by blocking LFA-1-dependent cell adhesion. It mediates adhesive interactions important for antigen-specific immune response, NK-cell mediated clearance, lymphocyte recirculation, and other cellular interactions important for immune response and surveillance.

## Storage

Storage:

Store at 2-8°C. Avoid exposure to light. Stable for one year after shipment.

Storage Buffer:

PBS with 0.09% sodium azide and 0.5% BSA, pH7.3

For technical support and original validation data for this product please contact:

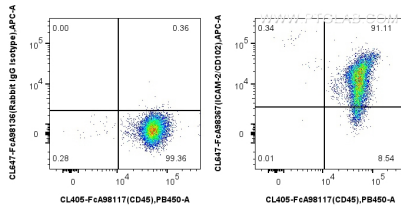
T: 4006900926

E: [Proteintech-CN@ptglab.com](mailto:Proteintech-CN@ptglab.com)

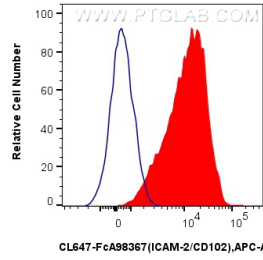
W: [ptgcn.com](http://ptgcn.com)

This product is exclusively available under Proteintech Group brand and is not available to purchase from any other manufacturer.

## Selected Validation Data



1x10<sup>6</sup> human PBMCs were surface stained with FcZero-rAb® CoraLite® Plus 405 Anti-Human CD45, and 5 ul CoraLite® Plus 647 Anti-Human ICAM-2/CD102 Rabbit RecAb (CL647-FcA98367, Clone: 242237F8) or FcZero-rAb® CoraLite® Plus 647 Rabbit IgG Isotype Control Recombinant Antibody (CL647-FcA98136, Clone: 240953C9). Cells were not fixed.



1x10<sup>6</sup> human PBMCs were surface stained with 5 ul CoraLite® Plus 647 Anti-Human ICAM-2/CD102 Rabbit RecAb (CL647-FcA98367, Clone: 242237F8) (red) or FcZero-rAb® CoraLite® Plus 647 Rabbit IgG Isotype Control Recombinant Antibody (CL647-FcA98136, Clone: 240953C9)(blue). Cells were not fixed.