

For Research Use Only

FcZero-rAb™ CoraLite® Plus 647 Anti-GGGGS Linker Rabbit Recombinant Antibody

Catalog Number: CL647-FcA98262



Basic Information

Catalog Number:

CL647-FcA98262

Concentration:

100ug, 500 ug/ml

Source:

Rabbit

Isotype:

IgG

GenBank Accession Number:

GeneID (NCBI):

Full Name:

Purification Method:

Protein A purification

CloneNo.:

242306C8

Recommended Dilutions:

FC: 0.25 ug per 10⁶ cells in a 100 µl suspension

Excitation/Emission maxima wavelengths:

654 nm / 674 nm

Applications

Tested Applications:

FC

Species Specificity:

recombinant protein

Positive Controls:

FC : Transfected HEK-293T cells,

Background Information

As a crucial element in the design of recombinant fusion proteins, linkers play an increasingly vital role in the construction of stable, bioactive fusion proteins (PMID: 23026637). GGGGS linker (G4S linker) is a flexible linker made of 4 glycine repeats followed by a serine amino acid (PMID:3045807). Due to its flexibility and resistance to proteases, GGGGS and its repeats are commonly used when engineering a protein, particularly in the construction of single-chain Fv (ScFv) domains expressed on the surfaces of CAR-T cells (PMID:23581628; 36874404). This antibody, raised against a synthetic peptide (GGGGSGGGSGGGGS), can recognize G4S, G4S*2, G4S*3, G4S*4, and G4S*5.

Storage

Storage:

Store at 2-8°C. Avoid exposure to light. Stable for one year after shipment.

Storage Buffer:

PBS with 0.09% sodium azide, pH7.3

For technical support and original validation data for this product please contact:

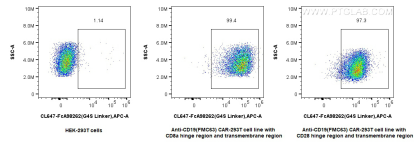
T: 4006900926

E: Proteintech-CN@ptglab.com

W: ptgcn.com

This product is exclusively available under Proteintech Group brand and is not available to purchase from any other manufacturer.

Selected Validation Data



1x10⁶ HEK-293T cells or anti-CD19 (FMC63) CAR with CD28 or CD8 hinge region and transmembrane region transfected HEK-293T cells were surface stained with 0.25 ug CoraLite® Plus 647 Anti-GGGS Linker Rabbit RecAb (CL647-FcA98262, Clone:242306C8). Cells were not fixed.