

For Research Use Only

# FcZero-rAb® CoraLite® Plus 647 Anti-Human FLT3/CD135 Rabbit Recombinant Antibody

Catalog Number: CL647-FcA98106



## Basic Information

Catalog Number:

CL647-FcA98106

Concentration:

100tests, 5 ul/test

Source:

Rabbit

Isotype:

IgG

GenBank Accession Number:

BC036028

GeneID (NCBI):

2322

UNIPROT ID:

P36888

Full Name:

fms-related tyrosine kinase 3

Calculated MW:

993 aa, 113 kDa

Purification Method:

Protein A purification

CloneNo.:

241414F8

Recommended Dilutions:

FC: 5 ul per 10<sup>6</sup> cells in a 100 µl suspension

Excitation/Emission maxima wavelengths:

654 nm / 674 nm

## Applications

Tested Applications:

FC

Species Specificity:

human

Positive Controls:

FC : Reh cells,

## Background Information

FLT3 (also known as CD135 or FLK2) is a tyrosine-protein kinase that acts as a cell-surface receptor for the cytokine FLT3LG and regulates differentiation, proliferation, and survival of hematopoietic progenitor cells and of dendritic cells. FLT3 was originally identified by its expression in hematopoietic stem/progenitor cells (PMID: 7507245). It is important for the normal development of hematopoietic stem/progenitor cells. Mutations that result in the constitutive activation of this receptor result in acute myeloid leukemia and acute lymphoblastic leukemia.

## Storage

Storage:

Store at 2-8°C. Avoid exposure to light. Stable for one year after shipment.

Storage Buffer:

PBS with 0.09% sodium azide and 0.5% BSA, pH7.3

For technical support and original validation data for this product please contact:

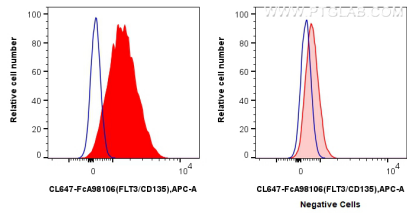
T: 4006900926

E: [Proteintech-CN@ptglab.com](mailto:Proteintech-CN@ptglab.com)

W: [ptgcn.com](http://ptgcn.com)

This product is exclusively available under Proteintech Group brand and is not available to purchase from any other manufacturer.

## Selected Validation Data



1x10<sup>6</sup> Reh cells (left) or U-937 cells (right) were surface stained with 5  $\mu$ l CoraLite® Plus 647 Anti-Human FLT3/CD135 Rabbit RecAb (CL647-FcA98106, Clone: 241414F8) (red) or FcZero-rAb® CoraLite® Plus 647 Rabbit IgG Isotype Control Recombinant Antibody (CL647-FcA98136, Clone: 240953C9) (blue). Cells were not fixed.