

For Research Use Only

# CoraLite® Plus 647 Anti-Mouse CD107a / LAMP1 Rabbit Recombinant Antibody

Catalog Number: CL647-98537-2



## Basic Information

Catalog Number:

CL647-98537-2

Concentration:

100ug, 500 ug/ml

Source:

Rabbit

Isotype:

IgG

Immunogen Catalog Number:

EG3858

GenBank Accession Number:

NM\_010684.3

GeneID (NCBI):

16783

UNIPROT ID:

P11438

Full Name:

lysosomal-associated membrane protein 1

Calculated MW:

44 kDa

Purification Method:

Protein A purification

CloneNo.:

250972H5

Recommended Dilutions:

FC: 0.25 ug per 10<sup>6</sup> cells in a 100 µl suspension

Excitation/Emission maxima wavelengths:

654 nm / 674 nm

## Applications

Tested Applications:

FC

Species Specificity:

mouse

Positive Controls:

FC : mouse peritoneal macrophages,

## Background Information

LAMP1 (CD107a) is a heavily glycosylated membrane protein enriched in the lysosomal membrane. LAMP1 is extensively glycosylated with asparagine-linked oligosaccharides which protect it from intracellular proteolysis (PMID: 10521503). Although LAMP1 is expressed largely in the endosome-lysosomal membrane of cells, it is also found on the plasma membrane (PMID: 16168398). Elevated LAMP1 expression at the cell surface has also been detected during platelet and granulocytic cell activation, as well as in some tumor cells (PMID: 29085473). LAMP1 functions to provide selectins with carbohydrate ligands. This protein has also been shown to be a marker of degranulation on lymphocytes such as CD8<sup>+</sup> and NK cells and may also play a role in tumor cell differentiation and metastasis (PMID: 18835598; 29085473; 9426697).

## Storage

Storage:

Store at 2-8°C. Avoid exposure to light. Stable for one year after shipment.

Storage Buffer:

PBS with 0.09% sodium azide, pH7.3

For technical support and original validation data for this product please contact:

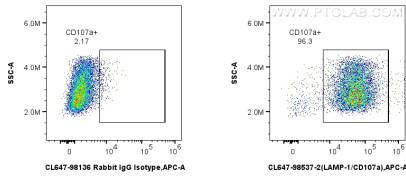
T: 4006900926

E: Proteintech-CN@ptglab.com

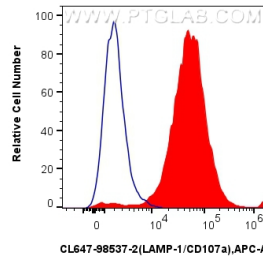
W: ptgcn.com

This product is exclusively available under Proteintech Group brand and is not available to purchase from any other manufacturer.

## Selected Validation Data



1x10<sup>6</sup> mouse peritoneal macrophages were surface stained with 0.25 ug CoraLite® Plus 647 Anti-Mouse CD107a / LAMP1 Rabbit RecAb (CL647-98537-2, Clone:250972H5) or CoraLite® Plus 647 Rabbit IgG Isotype Control Recombinant Antibody (CL647-98136, Clone: 240953C9). Cells were incubated with FC Receptor Block prior to staining and fixing. Cells were not fixed.



1x10<sup>6</sup> mouse peritoneal macrophages were surface stained with 0.25 ug CoraLite® Plus 647 Anti-Mouse CD107a / LAMP1 Rabbit RecAb (CL647-98537-2, Clone:250972H5) (red) or CoraLite® Plus 647 Rabbit IgG Isotype Control Recombinant Antibody (CL647-98136, Clone: 240953C9) (blue). Cells were incubated with FC Receptor Block prior to staining and fixing. Cells were not fixed.