

For Research Use Only

# CoraLite® Plus 647 Anti-Human NKp46/NCR1 Rabbit Recombinant Antibody

Catalog Number: CL647-98340



## Basic Information

Catalog Number:

CL647-98340

Concentration:

100 tests, 5 µl/test

Source:

Rabbit

Isotype:

IgG

Immunogen Catalog Number:

EG1364

GenBank Accession Number:

GeneID (NCBI):

9437

UNIPROT ID:

O76036-1

Full Name:

natural cytotoxicity triggering receptor 1

Calculated MW:

34kDa

Purification Method:

Protein A purification

CloneNo.:

242549D12

Recommended Dilutions:

FC: 5 µl per 10<sup>6</sup> cells in a 100 µl suspension

Excitation/Emission maxima wavelengths:

654 nm / 674 nm

## Applications

Tested Applications:

FC

Species Specificity:

human

Positive Controls:

FC : human PBMCs,

## Background Information

NKp46, also known as NCR1 or CD335, is an Ig-like superfamily cell surface receptor that is highly conserved in mammals (PMID: 22021440). NKp46 is a type I transmembrane glycoprotein consisting of two extracellular Ig-like domains, a transmembrane domain, and an intracellular tail (PMID: 9730896). It is expressed on NK cells, rare T-cell subsets and a mucosal population of NKp46+ innate lymphoid cells (PMID: 9730896; 22021440). NKp46 is the major triggering receptor involved in the natural cytotoxicity (PMID: 10359120; 10092106; 15356098).

## Storage

Storage:

Store at 2-8°C. Avoid exposure to light. Stable for one year after shipment.

Storage Buffer:

PBS with 0.09% sodium azide and 0.5% BSA, pH7.3

For technical support and original validation data for this product please contact:

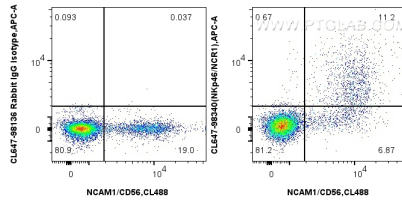
T: 4006900926

E: [Proteintech-CN@ptglab.com](mailto:Proteintech-CN@ptglab.com)

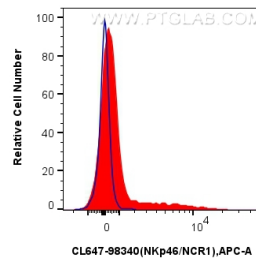
W: [ptgcn.com](http://ptgcn.com)

This product is exclusively available under Proteintech Group brand and is not available to purchase from any other manufacturer.

## Selected Validation Data



1x10<sup>6</sup> human PBMCs were surface stained with CoraLite® Plus 488 Anti-Human NCAM1/CD56, and 5 ul CoraLite® Plus 647 Anti-Human NKp46/NCR1 Rabbit RecAb (CL647-98340, Clone: 242549D12) or CoraLite® Plus 647 Rabbit IgG Isotype Control RecAb (CL647-98136, Clone: 240953C9). Cells were incubated with FC Receptor Block prior to staining. Cells were not fixed.



1x10<sup>6</sup> human PBMCs were surface stained with 5 ul CoraLite® Plus 647 Anti-Human NKp46/NCR1 Rabbit RecAb (CL647-98340, Clone: 242549D12) (red), or CoraLite® Plus 647 Rabbit IgG Isotype Control RecAb (CL647-98136, Clone: 240953C9) (blue). Cells were incubated with FC Receptor Block prior to staining. Cells were not fixed.