

For Research Use Only

# CoraLite® Plus 647 Anti-Human CD93 Rabbit Recombinant Antibody

Catalog Number: CL647-98337



## Basic Information

Catalog Number:

CL647-98337

Concentration:

100 tests, 5 µl/test

Source:

Rabbit

Isotype:

IgG

Immunogen Catalog Number:

EG2794

GenBank Accession Number:

NM\_012072.3

GeneID (NCBI):

22918

UNIPROT ID:

Q9NPY3

Full Name:

CD93 molecule

Calculated MW:

69 kDa

Purification Method:

Protein A purification

CloneNo.:

242464E6

Recommended Dilutions:

FC: 5 µl per 10<sup>6</sup> cells in a 100 µl suspension

Excitation/Emission maxima wavelengths:

654 nm / 674 nm

## Applications

Tested Applications:

FC

Species Specificity:

human

Positive Controls:

FC : human PBMCs,

## Background Information

CD93, also known as C1qR or C1qR(p), is a single-pass type I transmembrane glycoprotein and a member of the group 14 of the C-type lectin-like domain (CTLD) superfamily, which also includes endosialin/CD248, thrombomodulin, and CLEC14A (PMID: 31287944). CD93 consists of a C-type lectin-like domain, five EGF-like repeats, a mucin-like domain, a transmembrane domain and a cytoplasmic domain (PMID: 28912033). CD93 is mainly expressed on endothelial cells and has been reported to be expressed by neurons and various cells of the hematopoietic system, including monocytes, neutrophils, B cells, natural killer cells, platelets and hematopoietic stem cells (PMID: 37443812). CD93 plays a role in various physiological processes including angiogenesis, inflammation, and cell adhesion (PMID: 31287944).

## Storage

Storage:

Store at 2-8°C. Avoid exposure to light. Stable for one year after shipment.

Storage Buffer:

PBS with 0.09% sodium azide and 0.5% BSA, pH7.3

For technical support and original validation data for this product please contact:

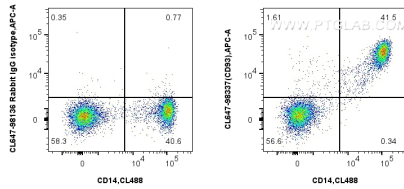
T: 4006900926

E: [Proteintech-CN@ptglab.com](mailto:Proteintech-CN@ptglab.com)

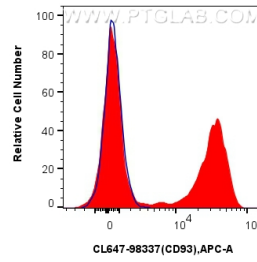
W: [ptgcn.com](http://ptgcn.com)

This product is exclusively available under Proteintech Group brand and is not available to purchase from any other manufacturer.

## Selected Validation Data



1x10<sup>6</sup> human PBMCs were surface stained with CoraLite® Plus 488 Anti-Human CD14, and 5 ul CoraLite® Plus 647 Anti-Human CD93 Rabbit RecAb (CL647-98337, Clone: 242464E6) or CoraLite® Plus 647 Rabbit IgG Isotype Control RecAb (CL647-98136, Clone: 240953C9). Cells were incubated with FC Receptor Block prior to staining. Cells were not fixed.



1x10<sup>6</sup> human PBMCs were surface stained with 5 ul CoraLite® Plus 647 Anti-Human CD93 Rabbit RecAb (CL647-98337, Clone: 242464E6) (red) or CoraLite® Plus 647 Rabbit IgG Isotype Control RecAb (CL647-98136, Clone: 240953C9) (blue). Cells were incubated with FC Receptor Block prior to staining. Cells were not fixed.