

For Research Use Only

CoraLite® Plus 647 Anti-Human IL-10RB Rabbit Recombinant Antibody

Catalog Number: CL647-98292



Basic Information

Catalog Number: CL647-98292	GenBank Accession Number: BC001903	Purification Method: Protein A purification
Concentration: 100tests, 5 ul/test	GeneID (NCBI): 3588	CloneNo.: 242302D2
Source: Rabbit	UNIPROT ID: Q08334	Recommended Dilutions: FC: 5 ul per 10 ⁶ cells in a 100 µl suspension
Isotype: IgG	Full Name: interleukin 10 receptor, beta	Excitation/Emission maxima wavelengths: 654 nm / 674 nm
Immunogen Catalog Number: EG3446	Calculated MW: 37 kDa	

Applications

Tested Applications: FC	Positive Controls: FC : human PBMCs,
Species Specificity: human	

Background Information

Interleukin-10 (IL-10) is an anti-inflammatory cytokine that plays a critical role in maintaining immune system balance. IL-10 signals through a receptor complex consisting of two molecules of the IL-10R alpha-chain (IL-10RA) and two molecules of the accessory IL-10R beta-chain (IL-10RB) (PMID: 22236434). IL-10RA and IL-10RB are members of the type II cytokine receptor family. IL-10RB, also known as IL-10R2 or CDw210b, is the signaling subunit of the IL-10R complex and is constitutively expressed in a variety of cell types (PMID: 24507158). Binding of IL-10 to the IL-10R complex leads to JAK1- and TYK2-mediated phosphorylation of STAT3 (PMID: 11244051; 10433356). IL-10RB is also shared by several other cytokines, including IL22, IL-26, IFN- γ , IL-28A/B and IL29 (PMID: 22236434).

Storage

Storage:
Store at 2-8°C. Avoid exposure to light. Stable for one year after shipment.
Storage Buffer:
PBS with 0.09% sodium azide and 0.5% BSA, pH7.3

For technical support and original validation data for this product please contact:

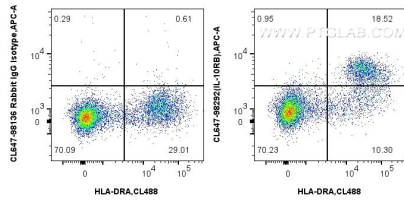
T: 4006900926

E: Proteintech-CN@ptglab.com

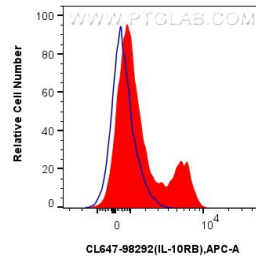
W: ptgcn.com

This product is exclusively available under Proteintech Group brand and is not available to purchase from any other manufacturer.

Selected Validation Data



1x10⁶ human PBMCs were surface stained with CoraLite® Plus 488 Anti-Human HLA-DR (L243) Mouse IgG2a Recombinant Antibody (CL488-65560, Clone: L243), and 5 ul CoraLite® Plus 647 Anti-Human IL-10RB Rabbit RecAb (CL647-98292, Clone: 242302D2) or CoraLite® Plus 647 Rabbit IgG Isotype Control RecAb (CL647-98136, Clone: 240953C9). Cells were incubated with FC Receptor Block prior to staining. Cells were not fixed.



1x10⁶ human PBMCs were surface stained with 5 ul CoraLite® Plus 647 Anti-Human IL-10RB Rabbit RecAb (CL647-98292, Clone:242302D2) (red) or CoraLite® Plus 647 Rabbit IgG Isotype Control RecAb (CL647-98136, Clone: 240953C9) (blue). Cells were incubated with FC Receptor Block prior to staining. Cells were not fixed.