

For Research Use Only

# CoraLite® Plus 647 Anti-Mouse Endoglin/CD105 Rabbit Recombinant Antibody

Catalog Number: CL647-98290



## Basic Information

Catalog Number: CL647-98290	GenBank Accession Number: NM_007932.2	Purification Method: Protein A purification
Concentration: 100ug, 500 ug/ml	GeneID (NCBI): 13805	CloneNo.: 242305E7
Source: Rabbit	UNIPROT ID: Q63961	Recommended Dilutions: FC: 0.25 ug per 10 <sup>6</sup> cells in a 100 µl suspension
Isotype: IgG	Full Name: endoglin	Excitation/Emission maxima wavelengths: 654 nm / 674 nm
Immunogen Catalog Number: EG1292	Calculated MW: 70 kDa	

## Applications

Tested Applications: FC	Positive Controls: FC : bEnd.3 cells,
Species Specificity: mouse	

## Background Information

Endoglin (ENG, CD105) is a homodimeric cell membrane glycoprotein of 180 kDa, composed of disulphide-linked subunits of 90-95 kDa. Endoglin is a proliferation-associated and hypoxia-inducible protein mainly expressed on vascular endothelial cells. It acts as an accessory receptor for transforming growth factor beta (TGF-β) and is involved in vascular development and remodelling. The important role of Endoglin in angiogenesis and in tumor progression makes it an ideal target for antiangiogenic therapy and a good marker for tumor prognosis. (PMID: 1326540; 14528280; 21737653; 12773481)

## Storage

**Storage:**  
Store at 2-8°C. Avoid exposure to light. Stable for one year after shipment.  
**Storage Buffer:**  
PBS with 0.09% sodium azide, pH7.3

For technical support and original validation data for this product please contact:

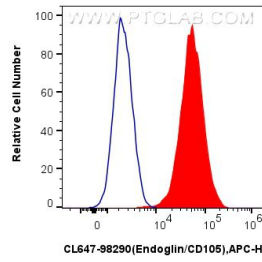
T: 4006900926

E: [Proteintech-CN@ptglab.com](mailto:Proteintech-CN@ptglab.com)

W: [ptgcn.com](http://ptgcn.com)

This product is exclusively available under Proteintech Group brand and is not available to purchase from any other manufacturer.

## Selected Validation Data



$1 \times 10^6$  bEnd.3 cells were surface stained with 0.25  $\mu$ g CoraLite® Plus 647 Anti-Mouse Endoglin/CD105 Rabbit RecAb (CL647-98290, Clone: 242305E7)(red) or CoraLite® Plus 647 Rabbit IgG Isotype Control RecAb (CL647-98136, Clone: 240953C9) (blue). Cells were not fixed.