

For Research Use Only

CoraLite® Plus 647 Anti-Mouse FcεR1a Rabbit Recombinant Antibody

Catalog Number: CL647-98289



Basic Information

Catalog Number: CL647-98289	GenBank Accession Number: NM_010184.2	Purification Method: Protein A purification
Concentration: 100ug, 500 ug/ml	GeneID (NCBI): 14125	CloneNo.: 242008G6
Source: Rabbit	UNIPROT ID: P20489	Recommended Dilutions: FC: 0.25 ug per 10 ⁶ cells in a 100 µl suspension
Isotype: IgG	Full Name: Fc receptor, IgE, high affinity I, alpha polypeptide	Excitation/Emission maxima wavelengths: 654 nm / 674 nm
Immunogen Catalog Number: EG1740	Calculated MW: 29 kDa	

Applications

Tested Applications: FC	Positive Controls: FC : MC/9 cells,
Species Specificity: mouse	

Background Information

Fc epsilon Receptor I alpha (FcεR1a) is a single-pass type I membrane protein that contains 2 immunoglobulin-like domains. FcεR1a forms a tetrameric complex, FcεRI, with one beta and two gamma subunits (PMID: 19406478). FcεRI is the high-affinity receptor for the Fc region of immunoglobulin E (IgE) (PMID: 1532373). It is expressed on mast cells and basophils and plays a central role in the allergic response (PMID: 2148316).

Storage

Storage:
Store at 2-8°C. Avoid exposure to light. Stable for one year after shipment.
Storage Buffer:
PBS with 0.09% sodium azide, pH7.3

For technical support and original validation data for this product please contact:

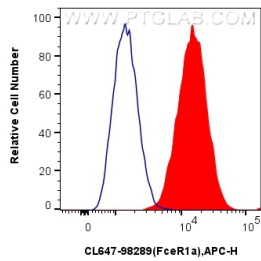
T: 4006900926

E: Proteintech-CN@ptglab.com

W: ptgcn.com

This product is exclusively available under Proteintech Group brand and is not available to purchase from any other manufacturer.

Selected Validation Data



1x10⁶ MC/9 cells were surface stained with 0.25 ug CoraLite® Plus 647 Anti-Mouse FcεR1a Rabbit RecAb (CL647-98289, Clone: 242008G6) (red) or CoraLite® Plus 647 Rabbit IgG Isotype Control RecAb (CL647-98136, Clone: 240953C9) (blue). Cells were not fixed.