

For Research Use Only

# CoraLite® Plus 647 Anti-Human CD82 Rabbit Recombinant Antibody

Catalog Number:CL647-98278



## Basic Information

Catalog Number:

CL647-98278

Concentration:

100tests, 5 ul/test

Source:

Rabbit

Isotype:

IgG

Immunogen Catalog Number:

EG1749

GenBank Accession Number:

NM\_002231.4

GeneID (NCBI):

3732

UNIPROT ID:

P27701-1

Full Name:

CD82 molecule

Calculated MW:

30 kDa

Purification Method:

Protein A purification

CloneNo.:

241765F7

Recommended Dilutions:

FC: 5 ul per 10<sup>6</sup> cells in a 100 µl suspension

Excitation/Emission maxima wavelengths:

654 nm / 674 nm

## Applications

Tested Applications:

FC

Species Specificity:

human

Positive Controls:

FC : human PBMCs,

## Background Information

CD82 is a membrane glycoprotein and belongs to the tetraspanin superfamily, many of which are implicated in the regulation of cell motility, morphology, fusion, signaling, fertilization, and differentiation. CD82 was originally identified as a suppressor of metastasis located on human chromosome 11p11.2 in prostate carcinoma. The majority of evidence indicates that CD82 expression is downregulated or abolished in a variety of malignant tumors. CD82 is present at high levels in human monocyte and macrophage lineages and in various epithelial cells in the prostate, lung, pancreas and many other tissues. In epithelial cells, CD82 is implicated in diverse biological processes such as cell adhesion, migration, apoptosis and morphogenesis.

## Storage

Storage:

Store at 2-8°C. Avoid exposure to light. Stable for one year after shipment.

Storage Buffer:

PBS with 0.09% sodium azide and 0.5% BSA, pH7.3

For technical support and original validation data for this product please contact:

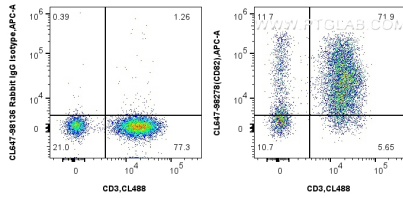
T: 4006900926

E: [Proteintech-CN@ptglab.com](mailto:Proteintech-CN@ptglab.com)

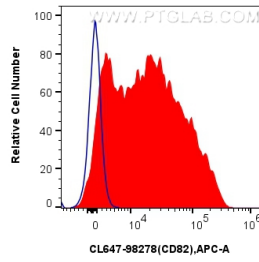
W: [ptgcn.com](http://ptgcn.com)

This product is exclusively available under Proteintech Group brand and is not available to purchase from any other manufacturer.

## Selected Validation Data



1x10<sup>6</sup> human PBMCs were surface stained with CoraLite® Plus 488 Anti-Human CD3, and 5 ul CoraLite® Plus 647 Anti-Human CD82 Rabbit RecAb (CL647-98278, Clone: 241765F7) or CoraLite® Plus 647 Rabbit IgG Isotype Control Recombinant Antibody (CL647-98136, Clone: 240953C9). Cells were not fixed.



1x10<sup>6</sup> human PBMCs were surface stained with 5 ul CoraLite® Plus 647 Anti-Human CD82 Rabbit RecAb (CL647-98278, Clone: 241765F7) (red) or CoraLite® Plus 647 Rabbit IgG Isotype Control Recombinant Antibody (CL647-98136, Clone: 240953C9) (blue). Cells were not fixed.