

For Research Use Only

CoraLite® Plus 647 Anti-Mouse CD229/SLAMF3 Rabbit Recombinant Antibody

Catalog Number: CL647-98274



Basic Information

Catalog Number:

CL647-98274

Concentration:

100ug, 500 ug/ml

Source:

Rabbit

Isotype:

IgG

Immunogen Catalog Number:

EG1586

GenBank Accession Number:

NM_001277968.1

GeneID (NCBI):

17085

UNIPROT ID:

Q01965

Full Name:

Lymphocyte antigen 9

Calculated MW:

73 kDa

Purification Method:

Protein A purification

CloneNo.:

242312D12

Excitation/Emission maxima wavelengths:

654 nm / 674 nm

Applications

Tested Applications:

FC

Species Specificity:

mouse

Background Information

Signaling lymphocytic activation molecule 3 (SLAMF3), also known as CD229 or Ly9, is a type I transmembrane glycoprotein that belongs to the SLAM family receptors (PMID: 10970093; 15905546). It is composed of an extracellular region, which consists of four Ig-like domains, a transmembrane region, and a cytoplasmic tail, which includes two immunoreceptor tyrosine-based signaling motifs (ITSMs) and other tyrosine residues that act as binding sites for the SH2 structural domains (PMID: 8537117; 11369645; 38626547). SLAMF3 is mainly expressed in immune cells, such as T, B, and natural killer cells, and it is involved in the fundamental activation and suppression of these immune cells, as well as the regulation of complex immune networks (PMID: 38626547).

Storage

Storage:

Store at 2-8°C. Avoid exposure to light. Stable for one year after shipment.

Storage Buffer:

PBS with 0.09% sodium azide, pH7.3

For technical support and original validation data for this product please contact:

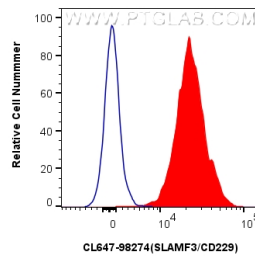
T: 4006900926

E: Proteintech-CN@ptglab.com

W: ptgcn.com

This product is exclusively available under Proteintech Group brand and is not available to purchase from any other manufacturer.

Selected Validation Data



1x10⁶ mouse splenocytes were surface stained with 0.25 ug CoraLite® Plus 647 Anti-Mouse CD229/SLAMF3 Rabbit RecAb (CL647-98274, Clone: 242312D12) (red) or 0.25 ug CoraLite® Plus 647 Rabbit IgG Isotype Control RecAb (CL647-98136, Clone: 240953C9) (blue). Cells were not fixed.