

For Research Use Only

CoraLite® Plus 647 Anti-Mouse CD9 Rabbit Recombinant Antibody

Catalog Number:CL647-98270



Basic Information

Catalog Number:

CL647-98270

Concentration:

100ug, 500 ug/ml

Source:

Rabbit

Isotype:

IgG

Immunogen Catalog Number:

EG1397

GenBank Accession Number:

NM_007657.3

GeneID (NCBI):

12527

UNIPROT ID:

P40240

Full Name:

CD9 antigen

Calculated MW:

25 kDa

Purification Method:

Protein A purification

CloneNo.:

242432C7

Recommended Dilutions:

FC: 0.25 ug per 10⁶ cells in a 100 µl suspension

Excitation/Emission maxima wavelengths:

654 nm / 674 nm

Applications

Tested Applications:

FC

Species Specificity:

mouse

Positive Controls:

FC : mouse bone marrow cells,

Background Information

The cell-surface molecule CD9, a member of the transmembrane-4 superfamily, interacts with the integrin family and other membrane proteins, and is postulated to participate in cell migration and adhesion. Expression of CD9 enhances membrane fusion between muscle cells and promotes viral infection in some cells (PMID:10459022). It is often used as a mesenchymal stem cell marker (PMID:18005405).

Storage

Storage:

Store at 2-8°C. Avoid exposure to light. Stable for one year after shipment.

Storage Buffer:

PBS with 0.09% sodium azide, pH7.3

For technical support and original validation data for this product please contact:

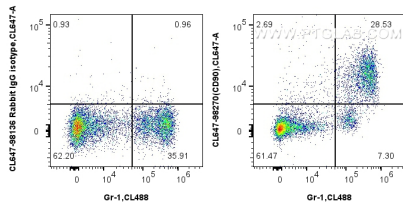
T: 4006900926

E: Proteintech-CN@ptglab.com

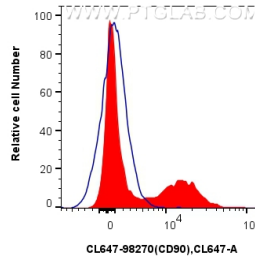
W: ptgcn.com

This product is exclusively available under Proteintech Group brand and is not available to purchase from any other manufacturer.

Selected Validation Data



1x10⁶ mouse bone marrow cells were surface stained with CoraLite® Plus 488 Anti-Mouse Ly-6G/Ly-6C (Gr-1) (RB6-8C5) (CL488-65140, Clone: RB6-8C5), and 0.25 ug CoraLite® Plus 647 Anti-Mouse CD9 Rabbit RecAb (CL647-98270, Clone: 242432C7) or CoraLite® Plus 647 Rabbit IgG Isotype Control RecAb (CL647-98136, Clone: 240953C9). Cells were not fixed.



1x10⁶ mouse bone marrow cells were surface stained with 0.25 ug CoraLite® Plus 647 Anti-Mouse CD9 Rabbit RecAb (CL647-98270, Clone: 242432C7) (red) or CoraLite® Plus 647 Rabbit IgG Isotype Control RecAb (CL647-98136, Clone: 240953C9) (blue). Cells were not fixed.