

For Research Use Only

CoraLite® Plus 647 Anti-Human CD107a / LAMP1 Rabbit Recombinant Antibody

Catalog Number: CL647-98266-2



Basic Information

Catalog Number: CL647-98266-2	GenBank Accession Number: NM_005561.4	Purification Method: Protein A purification
Concentration: 100 tests, 5 µl/test	GeneID (NCBI): 3916	CloneNo.: 242116E8
Source: Rabbit	ENSEMBL Gene ID: ENSG00000185896	Recommended Dilutions: IF/ICC: 1:50-1:500
Isotype: IgG	UNIPROT ID: P11279-1	FC (Intra): 5 µl per 10 ⁶ cells in a 100 µl suspension
Immunogen Catalog Number: EG2611	Full Name: lysosomal-associated membrane protein 1	Excitation/Emission maximum wavelengths: 654 nm / 674 nm
	Calculated MW: 45 kDa	

Applications

Tested Applications: IF/ICC, FC (Intra)	Positive Controls: IF/ICC : HepG2 cells,
Species Specificity: human	FC (Intra) : Jurkat cells,

Background Information

LAMP1 (CD107a) is a heavily glycosylated membrane protein enriched in the lysosomal membrane. LAMP1 is extensively glycosylated with asparagine-linked oligosaccharides which protect it from intracellular proteolysis (PMID: 10521503). Although LAMP1 is expressed largely in the endosome-lysosomal membrane of cells, it is also found on the plasma membrane (PMID: 16168398). Elevated LAMP1 expression at the cell surface has also been detected during platelet and granulocytic cell activation, as well as in some tumor cells (PMID: 29085473). LAMP1 functions to provide selectins with carbohydrate ligands. This protein has also been shown to be a marker of degranulation on lymphocytes such as CD8+ and NK cells and may also play a role in tumor cell differentiation and metastasis (PMID: 18835598; 29085473; 9426697).

Storage

Storage:
Store at 2-8°C. Avoid exposure to light. Stable for one year after shipment.
Storage Buffer:
PBS with 0.09% sodium azide and 0.5% BSA, pH7.3

For technical support and original validation data for this product please contact:

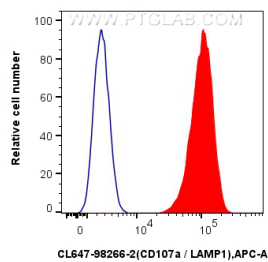
T: 4006900926

E: Proteintech-CN@ptglab.com

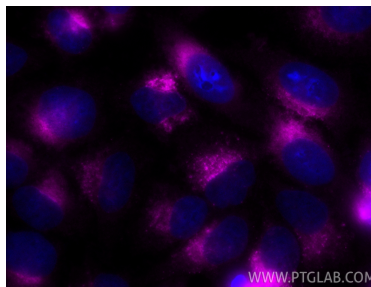
W: ptgcn.com

This product is exclusively available under Proteintech Group brand and is not available to purchase from any other manufacturer.

Selected Validation Data



1x10⁶ Jurkat cells were intracellularly stained with 5 μ l CoraLite® Plus 647 Anti-Human CD107a / LAMP1 Rabbit RecAb (CL647-98266-2, Clone: 242116E8) (red) or CoraLite® Plus 647 Rabbit IgG Isotype Control RecAb (CL647-98136, Clone: 240953C9) (blue). Cells were fixed with 4% PFA and permeabilized with Flow Cytometry Perm Buffer (PF00011-C).



Immunofluorescent analysis of (-20°C Ethanol) fixed HepG2 cells using CoraLite® Plus 647 CD107a / LAMP1 antibody (CL647-98266-2, Clone: 242116E8) at dilution of 1:200.