

For Research Use Only

# CoraLite® Plus 647 Anti-Mouse CXCL2 Rabbit Recombinant Antibody

Catalog Number: CL647-98259



## Basic Information

Catalog Number:

CL647-98259

Concentration:

100ug, 500 ug/ml

Source:

Rabbit

Isotype:

IgG

Immunogen Catalog Number:

EG2239

GenBank Accession Number:

NM\_009140

GeneID (NCBI):

20310

UNIPROT ID:

P10889

Full Name:

chemokine (C-X-C motif) ligand 2

Calculated MW:

11 kDa

Purification Method:

Protein A purification

CloneNo.:

242007G5

Recommended Dilutions:

FC (Intra): 0.25 ug per 10<sup>6</sup> cells in a 100 µl suspension

Excitation/Emission maxima wavelengths:

654 nm / 674 nm

## Applications

Tested Applications:

FC (Intra)

Species Specificity:

mouse

Positive Controls:

FC (Intra) : LPS and Brefeldin A treated RAW 264.7 cells,

## Background Information

CXCL2 is a member of the CXC subfamily, which encodes secreted proteins involved in immunoregulatory and inflammatory processes. CXCL2 is expressed at sites of inflammation and may suppress hematopoietic progenitor cell proliferation. CXCL2 plays an critical role in maintaining cancer-induced macrophage infiltration and the resulting mechanical hypersensitivity and persistent spontaneous nociception (PMID: 36754246).

## Storage

Storage:

Store at 2-8°C. Avoid exposure to light. Stable for one year after shipment.

Storage Buffer:

PBS with 0.09% sodium azide, pH7.3

For technical support and original validation data for this product please contact:

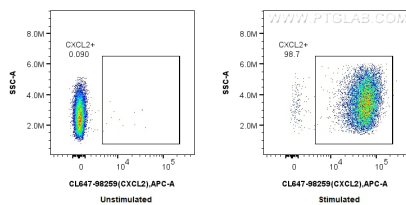
T: 4006900926

E: [Proteintech-CN@ptglab.com](mailto:Proteintech-CN@ptglab.com)

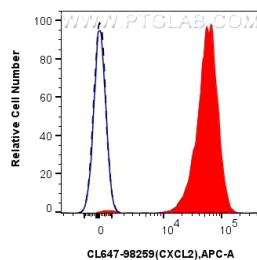
W: [ptgcn.com](http://ptgcn.com)

This product is exclusively available under Proteintech Group brand and is not available to purchase from any other manufacturer.

## Selected Validation Data



1x10<sup>6</sup> untreated or LPS and Brefeldin A treated RAW 264.7 cells were intracellularly stained with 0.25 ug CoraLite® Plus 647 Anti-Mouse CXCL2 Rabbit RecAb (CL647-98259, Clone: 242007G5). Cells were fixed with 4% PFA and permeabilized with Flow Cytometry Perm Buffer (PF00011-C).



1x10<sup>6</sup> LPS and Brefeldin A treated RAW 264.7 cells were intracellularly stained with 0.25 ug CoraLite® Plus 647 Anti-Mouse CXCL2 Rabbit RecAb (CL647-98259, Clone: 242007G5) (red) or CoraLite® Plus 647 Rabbit IgG Isotype Control RecAb (CL647-98136, Clone: 240953C9) (blue). 1x10<sup>6</sup> untreated RAW 264.7 cells were intracellularly stained with 0.25 ug CoraLite® Plus 647 Anti-Mouse CXCL2 Rabbit RecAb (CL647-98259, Clone: 242007G5) (black, dashed). Cells were fixed