

For Research Use Only

# CoraLite® Plus 647 Anti-Mouse CD31 Rabbit Recombinant Antibody

Catalog Number: CL647-98258



## Basic Information

Catalog Number:

CL647-98258

Concentration:

100ug, 500 µg/ml

Source:

Rabbit

Isotype:

IgG

Immunogen Catalog Number:

EG0846

GenBank Accession Number:

NM\_001305157.1

GeneID (NCBI):

18613

UNIPROT ID:

Q08481-1

Full Name:

platelet/endothelial cell adhesion molecule 1

Calculated MW:

81 kDa

Purification Method:

Protein A purification

CloneNo.:

242041B5

Excitation/Emission maxima wavelengths:

654 nm / 674 nm

## Applications

Tested Applications:

FC

Species Specificity:

mouse

## Background Information

CD31, also known as PECAM1 (Platelet endothelial cell adhesion molecule), is a member of the immunoglobulin gene superfamily of cell adhesion molecules. CD31 is a transmembrane glycoprotein that is highly expressed on the surface of the endothelium, making up a large portion of its intracellular junctions. It is also present on the surface of hematopoietic cells and immune cells including platelets, monocytes, neutrophils, natural killer cells, megakaryocytes and some types of T-cell (PMID: 9011572). As well as its role in cell-cell adhesion, CD31 functions as a signaling receptor, and is involved in important physiological events such as nitric oxide production, regulation of T-cell immunity and tolerance, leukocyte transendothelial migration and inflammation and angiogenesis (PMID: 21183735; 20978210; 17872453; 20634489).

## Storage

Storage:

Store at 2-8°C. Avoid exposure to light. Stable for one year after shipment.

Storage Buffer:

PBS with 0.09% sodium azide, pH7.3

For technical support and original validation data for this product please contact:

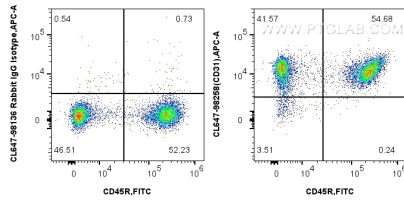
T: 4006900926

E: [Proteintech-CN@ptglab.com](mailto:Proteintech-CN@ptglab.com)

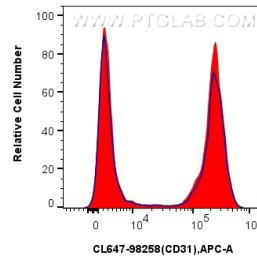
W: [ptgcn.com](http://ptgcn.com)

This product is exclusively available under Proteintech Group brand and is not available to purchase from any other manufacturer.

## Selected Validation Data



1x10<sup>6</sup> mouse splenocytes were surface stained with CoraLite® Plus 488 Anti-Mouse CD45R, and 0.25 ug CoraLite® Plus 647 Anti-Mouse CD31 Rabbit RecAb (CL647-98258, Clone: 242041B5) or 0.25 ug CoraLite® Plus 647 Rabbit IgG Isotype Control RecAb (CL647-98136, Clone: 240953C9). Cells were not fixed.



1x10<sup>6</sup> mouse splenocytes were surface stained with 0.25 ug CoraLite® Plus 647 Anti-Mouse CD31 Rabbit RecAb (CL647-98258, Clone: 242041B5)(red), or 0.25 ug CoraLite® Plus 647 Rabbit IgG Isotype Control RecAb (CL647-98136, Clone: 240953C9) (blue). Cells were not fixed.