

For Research Use Only

CoraLite® Plus 647 Anti-Human CD300e Rabbit Recombinant Antibody

Catalog Number: CL647-98235



Basic Information

Catalog Number:

CL647-98235

Concentration:

100 tests, 5 µl/test

Source:

Rabbit

Isotype:

IgG

Immunogen Catalog Number:

EG2638

GenBank Accession Number:

NM_181449.2

GeneID (NCBI):

342510

UNIPROT ID:

Q496F6

Full Name:

CD300e molecule

Calculated MW:

23 kDa

Purification Method:

Protein A purification

CloneNo.:

242031C10

Excitation/Emission maxima wavelengths:

654 nm / 674 nm

Applications

Tested Applications:

FC

Species Specificity:

human

Background Information

CD300e, also known as immune receptor expressed on myeloid cells 2 (IREM-2), CLM-2, or CMRF35-A5, is one of the CD300 family members which belong to the immunoglobulin (Ig) superfamily (PMID: 15557162; 20039296). CD300e is a type I transmembrane glycoprotein that contains an extracellular region comprising an Ig-like domain, a transmembrane region, and a short cytoplasmic tail (PMID: 15557162; 29358324). It is by monocytes and myeloid dendritic cells and transmits an immune-activating signal by interacting with DNAX-activating protein 12 (DAP12) (PMID: 29358324).

Storage

Storage:

Store at 2-8°C. Avoid exposure to light. Stable for one year after shipment.

Storage Buffer:

PBS with 0.09% sodium azide and 0.5% BSA, pH7.3

For technical support and original validation data for this product please contact:

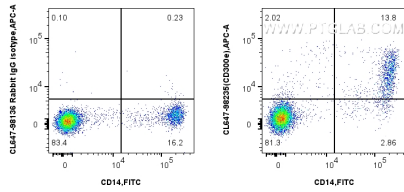
T: 4006900926

E: Proteintech-CN@ptglab.com

W: ptgcn.com

This product is exclusively available under Proteintech Group brand and is not available to purchase from any other manufacturer.

Selected Validation Data



1x10⁶ human PBMCs were surface stained with FITC Plus Anti-Human CD14 Rabbit Recombinant Antibody (FITC-98040, Clone: 230332D7), and 0.25 ug CoraLite® Plus 647 Anti-Human CD300e Rabbit RecAb (CL647-98235, Clone:242031C10) or 0.25 ug CoraLite® Plus 647 Rabbit IgG Isotype Control RecAb (CL647-98136, Clone: 240953C9). Cells were not fixed.