

For Research Use Only

CoraLite® Plus 647 Anti-Mouse CD147 Rabbit Recombinant Antibody

Catalog Number: CL647-98229



Basic Information

Catalog Number:

CL647-98229

Concentration:

100ug, 500 ug/ml

Source:

Rabbit

Isotype:

IgG

GenBank Accession Number:

NM_009768.2

GeneID (NCBI):

12215

UNIPROT ID:

P18572-1

Full Name:

basigin

Calculated MW:

42kDa

Purification Method:

Protein A purification

CloneNo.:

241852B4

Excitation/Emission maxima wavelengths:

654 nm / 674 nm

Applications

Tested Applications:

FC

Species Specificity:

mouse

Background Information

CD147, also known as Basigin or extracellular matrix metalloproteinase inducer (EMMPRIN), is a transmembrane glycoprotein that belongs to the immunoglobulin superfamily (PMID: 7812975). The molecule is composed of an intracellular portion, an extracellular portion and a single transmembrane region. CD147 is expressed on a variety of cell types (e.g., hematopoietic, epithelial, and endothelial cells) and at varying levels (PMID: 32968061). CD147 is a pleiotropic molecule that plays an important role in fetal, neuronal, lymphocyte and extracellular matrix development (PMID: 17945211).

Storage

Storage:

Store at 2-8°C. Avoid exposure to light. Stable for one year after shipment.

Storage Buffer:

PBS with 0.09% sodium azide.

For technical support and original validation data for this product please contact:

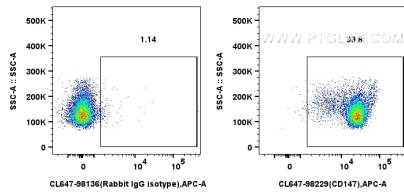
T: 4006900926

E: Proteintech-CN@ptglab.com

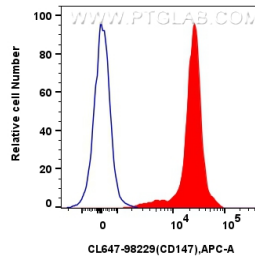
W: ptgcn.com

This product is exclusively available under Proteintech Group brand and is not available to purchase from any other manufacturer.

Selected Validation Data



1x10⁶ mouse thymocytes were surface stained with 0.25 ug CoraLite® Plus 647 Anti-Mouse CD147 Rabbit RecAb (CL647-98229, Clone:241852B4), or CoraLite® Plus 647 Rabbit IgG Isotype Control RecAb (CL647-98136, Clone: 240953C9). Cells were not fixed.



1x10⁶ mouse thymocytes were surface stained with 0.25 ug CoraLite® Plus 647 Anti-Mouse CD147 Rabbit RecAb (CL647-98229, Clone:241852B4) (red), or CoraLite® Plus 647 Rabbit IgG Isotype Control RecAb (CL647-98136, Clone: 240953C9) (blue). Cells were not fixed.