

For Research Use Only

CoraLite® Plus 647 Anti-Mouse CD157 Rabbit Recombinant Antibody

Catalog Number: CL647-98213



Basic Information

Catalog Number:

CL647-98213

Concentration:

100ug, 500 ug/ml

Source:

Rabbit

Isotype:

IgG

Immunogen Catalog Number:

EG1528

GenBank Accession Number:

GeneID (NCBI):

12182

UNIPROT ID:

Q64277

Full Name:

bone marrow stromal cell antigen 1

Calculated MW:

35kDa

Purification Method:

Protein A purification

CloneNo.:

241822H1

Excitation/Emission maxima wavelengths:

654 nm / 674 nm

Applications

Tested Applications:

FC

Species Specificity:

mouse

Background Information

CD157, also known as bone marrow stromal cell antigen 1 (BST-1), or ADP-ribosyl cyclase 2, is a glycosyl phosphatidylinositol-anchored protein that stimulates pre-B-cell growth and has adenosine diphosphate (ADP)-ribosyl cyclase and cyclic ADP-ribose (cADPR) hydrolase activity (PMID: 9473467, 11866528). The two enzymatic activities are responsible for the synthesis and hydrolysis of cADPR, a novel second messenger of calcium release from intracellular calcium stores.

Storage

Storage:

Store at 2-8°C. Avoid exposure to light. Stable for one year after shipment.

Storage Buffer:

PBS with 0.09% sodium azide, pH7.3

For technical support and original validation data for this product please contact:

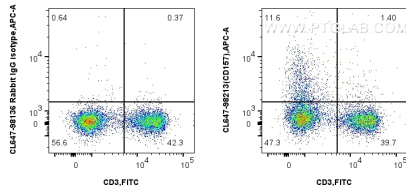
T: 4006900926

E: Proteintech-CN@ptglab.com

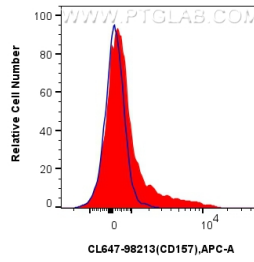
W: ptgcn.com

This product is exclusively available under Proteintech Group brand and is not available to purchase from any other manufacturer.

Selected Validation Data



1x10⁶ mouse splenocytes were surface stained with FITC Plus Anti-Mouse CD3, and 0.25 ug CoraLite® Plus 647 Anti-Mouse CD157 Rabbit RecAb (CL647-98213, Clone: 241822H1) or 0.25 ug CoraLite® Plus 647 Rabbit IgG Isotype Control RecAb (CL647-98136, Clone: 240953C9). Cells were not fixed.



1x10⁶ mouse splenocytes were surface stained with 0.25 ug CoraLite® Plus 647 Anti-Mouse CD157 Rabbit RecAb (CL647-98213, Clone:241822H1)(red) or 0.25 ug CoraLite® Plus 647 Rabbit IgG Isotype Control RecAb (CL647-98136, Clone: 240953C9) (blue). Cells were not fixed.