

For Research Use Only

# CoraLite® Plus 647 Anti-Human DC-SIGNR/CD299 Rabbit Recombinant Antibody

Catalog Number: CL647-98205



## Basic Information

Catalog Number:

CL647-98205

Concentration:

100tests, 5 ul/test

Source:

Rabbit

Isotype:

IgG

GenBank Accession Number:

BC038851

GeneID (NCBI):

10332

UNIPROT ID:

Q9H2X3

Full Name:

C-type lectin domain family 4, member M

Calculated MW:

45 kDa

Purification Method:

Protein A purification

CloneNo.:

241683G8

Recommended Dilutions:

FC: 5 ul per 10<sup>6</sup> cells in a 100 µl suspension

Excitation/Emission maxima wavelengths:

654 nm / 674 nm

## Applications

Tested Applications:

FC

Species Specificity:

human

Positive Controls:

FC : Transfected HEK-293T cells,

## Background Information

Dendritic cell-specific intracellular adhesion molecule-3-grabbing non-integrin (DC-SIGN/CD209) and DC-SIGN related (DC-SIGNR/CD299/L-SIGN/CD209L/CLEC4M) are trans-membrane C-type lectins that are calcium-dependent carbohydrate-binding proteins, which can act as cell-adhesion and pathogen-recognition receptors (PMID: 18458800). DC-SIGN and DC-SIGNR share 77% amino acid identity (PMID: 10975799; 11226297). DC-SIGN is expressed on subsets of dendritic cells and macrophages while DC-SIGNR is restricted to endothelial cells of the liver, lymph nodes and placenta (PMID: 17509452). DC-SIGNR serves as a receptor for ICAM-3. It recognizes a wide range of evolutionarily divergent pathogens.

## Storage

Storage:

Store at 2-8°C. Avoid exposure to light. Stable for one year after shipment.

Storage Buffer:

PBS with 0.09% sodium azide and 0.5% BSA, pH7.3

For technical support and original validation data for this product please contact:

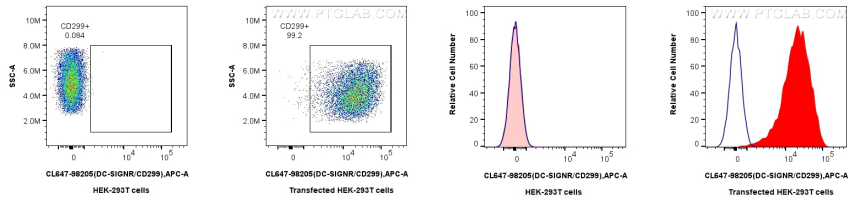
T: 4006900926

E: Proteintech-CN@ptglab.com

W: ptgcn.com

This product is exclusively available under Proteintech Group brand and is not available to purchase from any other manufacturer.

## Selected Validation Data



1x10<sup>6</sup> HEK-293T cells or DC-SIGNR/CD299 transfected HEK-293T cells were surface stained with 5 ul CoraLite® Plus 647 Anti-Human DC-SIGNR/CD299 Rabbit RecAb (CL647-98205, Clone:241683G8). Cells were not fixed.

1x10<sup>6</sup> HEK-293T cells or DC-SIGNR/CD299 transfected HEK-293T cells were surface stained with 5 ul CoraLite® Plus 647 Anti-Human DC-SIGNR/CD299 Rabbit RecAb (CL647-98205, Clone:241683G8)(red) or CoraLite® Plus 647 Rabbit IgG Isotype Control Recombinant Antibody (CL647-98136, Clone: 240953C9)(blue). Cells were not fixed.