

For Research Use Only

CoraLite® Plus 647 Anti-Mouse CSF2RA/CD116 Rabbit Recombinant Antibody

Catalog Number: CL647-98196



Basic Information

Catalog Number:

CL647-98196

Concentration:

100ug, 500 ug/ml

Source:

Rabbit

Isotype:

IgG

GenBank Accession Number:

NM_009970.2

GeneID (NCBI):

12982

UNIPROT ID:

Q00941

Full Name:

colony stimulating factor 2 receptor,
alpha, low-affinity (granulocyte-
macrophage)

Calculated MW:

42kDa

Purification Method:

Protein A purification

CloneNo.:

241889A5

Excitation/Emission maxima
wavelengths:

654 nm / 674 nm

Applications

Tested Applications:

FC

Species Specificity:

mouse

Background Information

CD116, also named as CSF2RA CDw116 CSF2RAX CSF2RAY CSF2RX CSF2RY GM-CSF-R-alpha GMCSFR and GMR, is a low affinity receptor for granulocyte-macrophage colony-stimulating factor. CD116 transduces a signal that results in the proliferation, differentiation, and functional activation of hematopoietic cells.

Storage

Storage:

Store at 2-8°C. Avoid exposure to light. Stable for one year after shipment.

Storage Buffer:

PBS with 0.09% sodium azide

For technical support and original validation data for this product please contact:

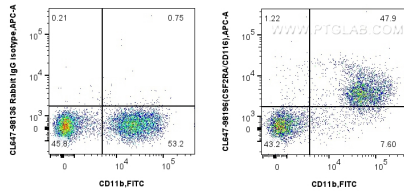
T: 4006900926

E: Proteintech-CN@ptglab.com

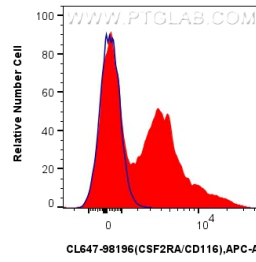
W: ptgcn.com

This product is exclusively available under Proteintech Group brand and is not available to purchase from any other manufacturer.

Selected Validation Data



1x10⁶ mouse bone marrow cells were surface stained with FITC Plus Anti-Mouse CD11b, and 0.25 ug CoraLite® Plus 647 Anti-Mouse CSF2RA/CD116 Rabbit RecAb (CL647-98196, Clone: 241889A5) or CoraLite® Plus 647 Rabbit IgG Isotype Control RecAb (CL647-98136, Clone: 240953C9). Cells were not fixed.



1x10⁶ mouse bone marrow cells were surface stained with 0.25 ug CoraLite® Plus 647 Anti-Mouse CSF2RA/CD116 Rabbit RecAb (CL647-98196, Clone: 241889A5) (red) or CoraLite® Plus 647 Rabbit IgG Isotype Control RecAb (CL647-98136, Clone: 240953C9) (blue). Cells were not fixed.