

For Research Use Only

# CoraLite® Plus 647 Anti-Mouse HER2/ErbB2 Rabbit Recombinant Antibody

Catalog Number: CL647-98153



## Basic Information

Catalog Number:

CL647-98153

Concentration:

100ug, 500 ug/ml

Source:

Rabbit

Isotype:

IgG

Immunogen Catalog Number:

EG0803

GenBank Accession Number:

NM\_001003817.1

GeneID (NCBI):

13866

UNIPROT ID:

P70424

Full Name:

v-erb-b2 erythroblastic leukemia  
viral oncogene homolog 2,  
neuro/glioblastoma derived  
oncogene homolog (avian)

Calculated MW:

139 kDa

Purification Method:

Protein A purification

CloneNo.:

241366E6

Excitation/Emission maxima  
wavelengths:

654 nm / 674 nm

## Applications

Tested Applications:

FC

Species Specificity:

mouse

## Background Information

HER2, also known as ErbB2, Neu, and CD340, is a 185-kDa transmembrane glycoprotein member of the epidermal growth factor (EGF) receptor family of receptor tyrosine kinases. It has no ligand-binding domain and therefore cannot bind growth factors. However, it does bind tightly to other ligand-bound EGF receptor family members to form a heterodimer, stabilizing ligand binding and enhancing kinase-mediated activation of downstream signaling pathways, such as those involving mitogen-activated protein kinase and phosphatidylinositol-3 kinase.

## Storage

Storage:

Store at 2-8°C. Avoid exposure to light. Stable for one year after shipment.

Storage Buffer:

PBS with 0.09% sodium azide, pH7.3

For technical support and original validation data for this product please contact:

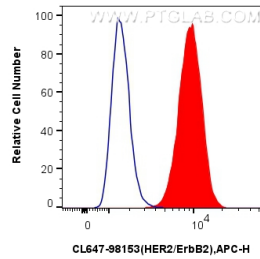
T: 4006900926

E: [Proteintech-CN@ptglab.com](mailto:Proteintech-CN@ptglab.com)

W: [ptgcn.com](http://ptgcn.com)

This product is exclusively available under Proteintech Group brand and is not available to purchase from any other manufacturer.

## Selected Validation Data



$1 \times 10^6$  NIH/3T3 cells were surface stained with 0.25  $\mu$ g CoraLite® Plus 647 Anti-Mouse HER2/ErbB2 Rabbit RecAb (CL647-98153, Clone: 241366E6)(red) or 0.25  $\mu$ g CoraLite® Plus 647 Rabbit IgG Isotype Control RecAb (CL647-98136, Clone: 240953C9) (blue). Cells were not fixed.