

For Research Use Only

# CoraLite® Plus 647 Anti-Human IL-18R1/CD218a Rabbit Recombinant Antibody

Catalog Number: CL647-98150



## Basic Information

Catalog Number:

CL647-98150

Concentration:

100 tests, 5 µl/test

Source:

Rabbit

Isotype:

IgG

GenBank Accession Number:

BC093975

GeneID (NCBI):

8809

UNIPROT ID:

Q13478

Full Name:

interleukin 18 receptor 1

Calculated MW:

541 aa, 62 kDa

Purification Method:

Protein A purification

CloneNo.:

241673D3

Recommended Dilutions:

FC: 5 µl per 10<sup>6</sup> cells in a 100 µl suspension

Excitation/Emission maxima wavelengths:

654 nm / 674 nm

## Applications

Tested Applications:

FC

Species Specificity:

human

Positive Controls:

FC : human peripheral blood leukocytes,

## Background Information

IL-18R1 (CD218a) is a component of the interleukin-18 receptor (IL-18R) complex, which is critical for the signaling of IL-18, a pro-inflammatory cytokine. This receptor complex, consisting of IL-18R1 and the IL-18 receptor accessory protein (IL-18RAP), belongs to the immunoglobulin-like family of interleukin-1 receptors (PMID: 35461924). IL-18R1 plays a significant role in inducing the production of interferon-gamma (IFN- $\gamma$ ) and other inflammatory cytokines, contributing to innate and adaptive immune responses (PMID: 2550053). It is also suggested to play a role in hypertension and chronic kidney disease, where the IL-18/IL-18R1 signaling axis may have diagnostic and therapeutic potential (PMID: 35461924).

## Storage

Storage:

Store at 2-8°C. Avoid exposure to light. Stable for one year after shipment.

Storage Buffer:

PBS with 0.09% sodium azide and 0.5% BSA, pH7.3

For technical support and original validation data for this product please contact:

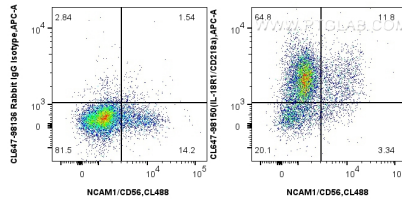
T: 4006900926

E: [Proteintech-CN@ptglab.com](mailto:Proteintech-CN@ptglab.com)

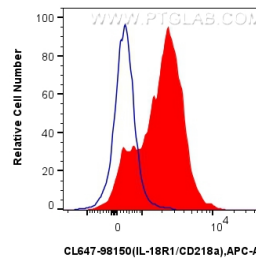
W: [ptgcn.com](http://ptgcn.com)

This product is exclusively available under Proteintech Group brand and is not available to purchase from any other manufacturer.

## Selected Validation Data



1x10<sup>6</sup> human peripheral blood leukocytes were surface stained with 5 ul CoraLite® Plus 647 Anti-Human IL-18R1/CD218a Rabbit RecAb (CL647-98150, Clone: 241673D3) or CoraLite® Plus 647 Rabbit IgG Isotype Control RecAb (CL647-98136, Clone: 240953C9). Cells were co-stained with 5 ul CoraLite® Plus 488 Anti-Human NCAM1/CD56 (B-A19) (CL488-65264, Clone: B-A19). Cells were not fixed.



1x10<sup>6</sup> human peripheral blood leukocytes were surface stained with 5 ul CoraLite® Plus 647 Anti-Human IL-18R1/CD218a Rabbit RecAb (CL647-98150, Clone: 241673D3) (red) or CoraLite® Plus 647 Rabbit IgG Isotype Control RecAb (CL647-98136, Clone: 240953C9) (blue). Cells were not fixed.