

For Research Use Only

# CoraLite® Plus 647 Anti-Human CD157 Rabbit Recombinant Antibody

Catalog Number: CL647-98146



## Basic Information

Catalog Number:

CL647-98146

Concentration:

100 tests, 5 µl/test

Source:

Rabbit

Isotype:

IgG

GenBank Accession Number:

BC012095

GeneID (NCBI):

683

UNIPROT ID:

Q10588

Full Name:

bone marrow stromal cell antigen 1

Calculated MW:

318 aa, 36 kDa

Purification Method:

Protein A purification

CloneNo.:

241424H5

Recommended Dilutions:

FC: 5 µl per 10<sup>6</sup> cells in a 100 µl suspension

Excitation/Emission maxima wavelengths:

654 nm / 674 nm

## Applications

Tested Applications:

FC

Species Specificity:

human

Positive Controls:

FC : human peripheral blood leukocytes,

## Background Information

CD157, also known as bone marrow stromal cell antigen 1 (BST-1), or ADP-ribosyl cyclase 2, is a glycosyl phosphatidylinositol-anchored protein that stimulates pre-B-cell growth and has adenosine diphosphate (ADP)-ribosyl cyclase and cyclic ADP-ribose (cADPR) hydrolase activity (PMID: 9473467, 11866528). The two enzymatic activities are responsible for the synthesis and hydrolysis of cADPR, a novel second messenger of calcium release from intracellular calcium stores.

## Storage

Storage:

Store at 2-8°C. Avoid exposure to light. Stable for one year after shipment.

Storage Buffer:

PBS with 0.09% sodium azide and 0.5% BSA, pH7.3

For technical support and original validation data for this product please contact:

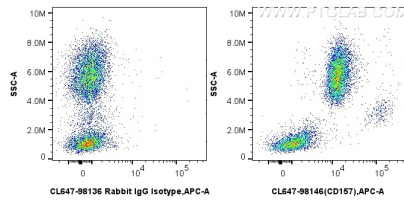
T: 4006900926

E: [Proteintech-CN@ptglab.com](mailto:Proteintech-CN@ptglab.com)

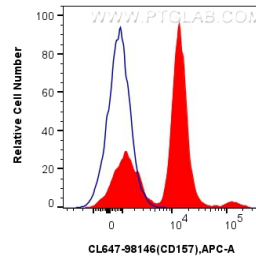
W: [ptgcn.com](http://ptgcn.com)

This product is exclusively available under Proteintech Group brand and is not available to purchase from any other manufacturer.

## Selected Validation Data



1x10<sup>6</sup> human peripheral blood leukocytes were surface stained with 5 ul CoraLite® Plus 647 Anti-Human CD157 Rabbit RecAb (CL647-98146, Clone: 241424H5) or CoraLite® Plus 647 Rabbit IgG Isotype Control RecAb (CL647-98136, Clone: 240953C9). Cells were incubated with FC Receptor Block prior to staining. Cells were not fixed.



1x10<sup>6</sup> human peripheral blood leukocytes were surface stained with 5 ul CoraLite® Plus 647 Anti-Human CD157 Rabbit RecAb (CL647-98146, Clone: 241424H5) (red) or CoraLite® Plus 647 Rabbit IgG Isotype Control RecAb (CL647-98136, Clone: 240953C9) (blue). Cells were incubated with FC Receptor Block prior to staining. Cells were not fixed.