

For Research Use Only

CoraLite® Plus 647 Anti-Human CD45 Rabbit Recombinant Antibody

Catalog Number: CL647-98117



Basic Information

Catalog Number:

CL647-98117

Concentration:

100 tests, 5 µl/test

Source:

Rabbit

Isotype:

IgG

Immunogen Catalog Number:

EG2486

GenBank Accession Number:

GeneID (NCBI):

5788

ENSEMBL Gene ID:

ENSG00000081237

Full Name:

protein tyrosine phosphatase, receptor type, C

Calculated MW:

147 kDa

Purification Method:

Protein A purification

CloneNo.:

241670E10

Excitation/Emission maxima wavelengths:

654 nm / 674 nm

Applications

Tested Applications:

FC

Species Specificity:

human

Background Information

CD45, also known as protein tyrosine phosphatase, receptor type C, is a type I transmembrane protein expressed on the surface of all haematopoietic cells with the exception of erythrocytes and platelets (PMID: 3489673; 28615666). CD45 is a pan-haematopoietic cell marker and has been shown to be essential for T- and B-cell activation and signalling (PMID: 9429890; 16378097).

Storage

Storage:

Store at 2-8°C. Avoid exposure to light. Stable for one year after shipment.

Storage Buffer:

PBS with 0.09% sodium azide, pH7.3

For technical support and original validation data for this product please contact:

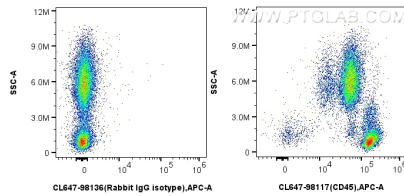
T: 4006900926

E: Proteintech-CN@ptglab.com

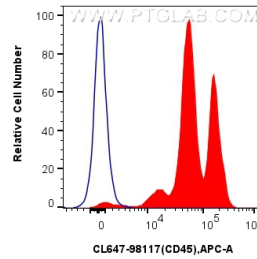
W: ptgcn.com

This product is exclusively available under Proteintech Group brand and is not available to purchase from any other manufacturer.

Selected Validation Data



1×10^6 human peripheral blood leukocytes were surface stained with 5 μ l CoraLite® Plus 647 Anti-Human CD45 Rabbit Recombinant Antibody (CL647-98117, Clone: 241670E10) or CoraLite® Plus 647 Rabbit IgG Isotype Control Recombinant Antibody (CL647-98136, Clone: 240953C9). Cells were incubated with FC Receptor Block prior to staining. Cells were not fixed.



1×10^6 human peripheral blood leukocytes were surface stained with 5 μ l CoraLite® Plus 647 Anti-Human CD45 Rabbit Recombinant Antibody (CL647-98117, Clone: 241670E10) (red) or CoraLite® Plus 647 Rabbit IgG Isotype Control Recombinant Antibody (CL647-98136, Clone: 240953C9) (blue). Cells were incubated with FC Receptor Block prior to staining. Cells were not fixed.