

For Research Use Only

# CoraLite® Plus 647 Anti-Human TIM3 Rabbit Recombinant Antibody

Catalog Number: CL647-98115



## Basic Information

Catalog Number:

CL647-98115

Concentration:

100 tests, 5 µl/test

Source:

Rabbit

Isotype:

IgG

GenBank Accession Number:

BC020843

GeneID (NCBI):

84868

UNIPROT ID:

Q8TDQ0

Full Name:

hepatitis A virus cellular receptor 2

Calculated MW:

301 aa, 33 kDa

Purification Method:

Protein A purification

CloneNo.:

241422H1

Recommended Dilutions:

FC: 5 µl per 10<sup>6</sup> cells in a 100 µl suspension

Excitation/Emission maximum wavelengths:

654 nm / 674 nm

## Applications

Tested Applications:

FC

Species Specificity:

human

Positive Controls:

FC : Anti-CD3/CD28 treated human PBMCs,

## Background Information

TIM3, also known as HAVCR2, is a member of the recently discovered T cell Ig and mucin domain-containing molecule superfamily. TIM3 is a negative regulatory molecule that is important for T cell tolerance and has a crucial role in autoimmunity and T cell exhaustion during chronic viral infection (PMID: 23180819). TIM3 is expressed by T-helper type 1 (Th1) cells, macrophage, monocyte, dendritic cells, CD8+ T cell and other lymphocyte subsets. Galectin-9 is a ligand for TIM3. TIM3-galectin-9 pathway negatively regulates T helper type 1 immunity (PMID: 16286920).

## Storage

Storage:

Store at 2-8°C. Avoid exposure to light. Stable for one year after shipment.

Storage Buffer:

PBS with 0.09% sodium azide and 0.5% BSA, pH7.3

For technical support and original validation data for this product please contact:

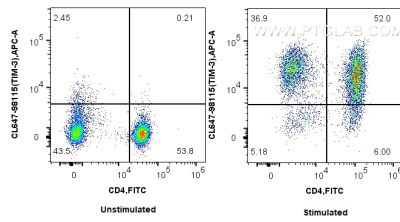
T: 4006900926

E: [Proteintech-CN@ptglab.com](mailto:Proteintech-CN@ptglab.com)

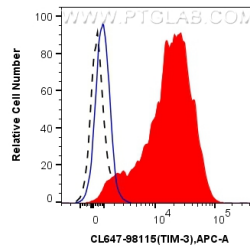
W: [ptgcn.com](http://ptgcn.com)

This product is exclusively available under Proteintech Group brand and is not available to purchase from any other manufacturer.

## Selected Validation Data



1x10<sup>6</sup> untreated or anti-CD3/CD28 treated human PBMCs were surface stained with FITC Plus Anti-Human CD4 and 5 ul Coralite® Plus 647 Anti-Human TIM3 Rabbit RecAb (CL647-98115, Clone: 241422H1). Cells were not fixed.



1x10<sup>6</sup> anti-CD3/CD28 treated human PBMCs were surface stained with 5 ul Coralite® Plus 647 Anti-Human TIM3 Rabbit RecAb (CL647-98115, Clone: 241422H1) (red) or Coralite® Plus 647 Rabbit IgG Isotype Control RecAb (CL647-98136, Clone: 240953C9) (blue). 1x10<sup>6</sup> untreated human PBMCs were surface stained with 5 ul Coralite® Plus 647 Anti-Human TIM3 Rabbit RecAb (CL647-98115, Clone: 241422H1) (black, dashed). Cells were not fixed.