

For Research Use Only

CoraLite® Plus 647 Anti-Human CD79b Rabbit Recombinant Antibody

Catalog Number: CL647-98075



Basic Information

Catalog Number:

CL647-98075

Concentration:

100 tests, 5 µl/test

Source:

Rabbit

Isotype:

IgG

GenBank Accession Number:

BC032651

GeneID (NCBI):

974

UNIPROT ID:

P40259

Full Name:

CD79b molecule, immunoglobulin-associated beta

Calculated MW:

229 aa, 26 kDa

Purification Method:

Protein A purification

CloneNo.:

241273B7

Excitation/Emission maxima wavelengths:

654 nm / 674 nm

Applications

Tested Applications:

FC

Species Specificity:

human

Background Information

CD79 molecule encompasses two transmembrane proteins, CD79a and CD79b, which form a disulfide-linked heterodimer and are members of the immunoglobulin (Ig) gene superfamily (PMID: 2033258; 1375264; 2304550). CD79b molecule (also known as B29, IGB, AGM6, and Igbeta) is expressed almost exclusively on B cells and B-cell neoplasms, influencing antigen internalization and increasing antigen presentation efficiency (PMID: 7552998). CD79b mutation could be a key biomarker for DLBCL disease progression (PMID: 36182550).

Storage

Storage:

Store at 2-8°C. Avoid exposure to light. Stable for one year after shipment.

Storage Buffer:

PBS with 0.09% sodium azide and 0.5% BSA, pH7.3

For technical support and original validation data for this product please contact:

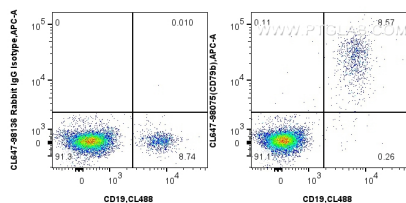
T: 4006900926

E: Proteintech-CN@ptglab.com

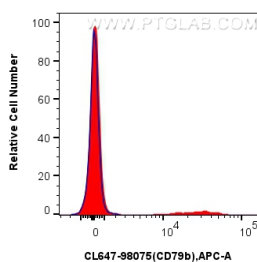
W: ptgcn.com

This product is exclusively available under Proteintech Group brand and is not available to purchase from any other manufacturer.

Selected Validation Data



1x10⁶ human PBMCs were surface stained with CoraLite® Plus 488 Anti-Human CD19, and 5 ul CoraLite® Plus 647 Anti-Human CD79b Rabbit RecAb (CL647-98075, Clone: 241273B7) or CoraLite® Plus 647 Rabbit IgG Isotype Control RecAb (CL647-98136, Clone: 240953C9). Cells were not fixed.



1x10⁶ human PBMCs were surface stained with 5 ul CoraLite® Plus 647 Anti-Human CD79b Rabbit RecAb (CL647-98075, Clone:241273B7) (red), or CoraLite® Plus 647 Rabbit IgG Isotype Control RecAb (CL647-98136, Clone: 240953C9) (blue). Cells were not fixed.