

For Research Use Only

# CoraLite® Plus 647 Anti-Mouse E-selectin/CD62E Rabbit Recombinant Antibody

Catalog Number: **CL647-98065**



## Basic Information

<b>Catalog Number:</b> CL647-98065	<b>GenBank Accession Number:</b> NM_011345.2	<b>Purification Method:</b> Protein A purification
<b>Concentration:</b> 100ug, 500 ug/ml	<b>GeneID (NCBI):</b> 20339	<b>CloneNo.:</b> 240700D4
<b>Source:</b> Rabbit	<b>UNIPROT ID:</b> Q00690	<b>Recommended Dilutions:</b> FC: 0.25 ug per 10 <sup>6</sup> cells in a 100 µl suspension
<b>Isotype:</b> IgG	<b>Full Name:</b> selectin, endothelial cell	<b>Excitation/Emission maxima wavelengths:</b> 654 nm / 674 nm
<b>Immunogen Catalog Number:</b> EG0610	<b>Calculated MW:</b> 67KD	

## Applications

<b>Tested Applications:</b> FC	<b>Positive Controls:</b> FC : bEnd.3 cells,
<b>Species Specificity:</b> mouse	

## Background Information

E-selectin, also known as CD62E or ELAM-1, is a member of the selectin family of adhesion molecules that also includes L-selectin and P-selectin. E-selectin is an inducible endothelial cell surface molecule. Its expression on endothelial cells is transcriptionally upregulated by various proinflammatory substances such as IL-1, TNF  $\alpha$  and lipopolysaccharide (LPS). Besides, it can be secreted by endothelial cells, and can be detected in a soluble form (sE-selectin) in serum. During inflammation, E-selectin plays an important part in recruiting leukocytes to the site of injury. (PMID: 2827173; 1382417; 8943958)

## Storage

**Storage:**  
Store at 2-8°C. Avoid exposure to light. Stable for one year after shipment.  
**Storage Buffer:**  
PBS with 0.09% sodium azide, pH7.3

For technical support and original validation data for this product please contact:

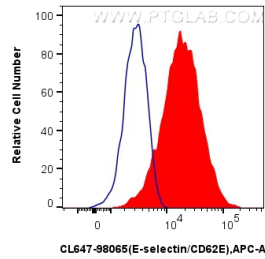
T: 4006900926

E: [Proteintech-CN@ptglab.com](mailto:Proteintech-CN@ptglab.com)

W: [ptgcn.com](http://ptgcn.com)

This product is exclusively available under Proteintech Group brand and is not available to purchase from any other manufacturer.

## Selected Validation Data



$1 \times 10^6$  bEnd.3 cells were surface stained with 0.25  $\mu$ g CoraLite® Plus 647 Anti-Mouse E-selectin/CD62E Rabbit RecAb (CL647-98065, Clone: 240700D4) (red), or 0.25  $\mu$ g CoraLite® Plus 647 Rabbit IgG Isotype Control RecAb (CL647-98136, Clone: 240953C9) (blue). Cells were not fixed.