

For Research Use Only

CoraLite® Plus 647 Anti-Human LIGHT/CD258 Rabbit Recombinant Antibody

Catalog Number: CL647-98063



Basic Information

Catalog Number:

CL647-98063

Concentration:

100 tests, 5 µl/test

Source:

Rabbit

Isotype:

IgG

Immunogen Catalog Number:

EG32095

GenBank Accession Number:

NM_003807

GeneID (NCBI):

8740

UNIPROT ID:

O43557

Full Name:

tumor necrosis factor (ligand)
superfamily, member 14

Calculated MW:

26KD

Purification Method:

Protein A purification

CloneNo.:

240694D7

Excitation/Emission maxima
wavelengths:

654 nm / 674 nm

Applications

Tested Applications:

FC

Species Specificity:

human

Positive Controls:

FC : PMA and ionomycin treated human PBMCs,

Background Information

LIGHT, also known as TNFSF14, HVEM, or CD258, is a type II transmembrane protein that belongs to the TNF superfamily (PMID: 9462508). It is predominantly expressed in lymphoid tissues and produced by activated T cells and immature dendritic cells (DCs) (PMID: 9462508; 10754304). Through its two primary functional receptors HVEM (TNFSF14) and lymphotoxin β receptor (LT β R), LIGHT signaling is involved in development and maintenance of lymphoid tissues, as well as innate and adaptive immune responses (PMID: 24575096; 26720335). In addition to the membrane form, LIGHT can also exist as a soluble form generated by cleavage of the extracellular portion of the membrane form.

Storage

Storage:

Store at 2-8°C. Avoid exposure to light. Stable for one year after shipment.

Storage Buffer:

PBS with 0.09% sodium azide and 0.5% BSA, pH7.3

For technical support and original validation data for this product please contact:

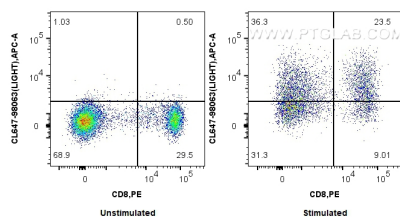
T: 4006900926

E: Proteintech-CN@ptglab.com

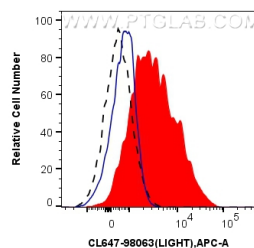
W: ptgcn.com

This product is exclusively available under Proteintech Group brand and is not available to purchase from any other manufacturer.

Selected Validation Data



1x10⁶ untreated or PMA and ionomycin treated human PBMCs were surface stained with PE Anti-Human CD8a and 5 ul CoraLite® Plus 647 Anti-Human LIGHT/CD258 Rabbit RecAb (CL647-98063, Clone: 240694D7). Cells were not fixed.



1x10⁶ PMA, Ionomycin and Brefeldin A treated human PBMCs were surface stained with 5 ul CoraLite® Plus 647 Anti-Human LIGHT/CD258 Rabbit RecAb (CL647-98063, Clone: 240694D7) (red) or CoraLite® Plus 647 Rabbit IgG Isotype Control RecAb (CL647-98136, Clone: 240953C9) (blue). 1x10⁶ untreated human PBMCs were surface stained with 5 ul CoraLite® Plus 647 Anti-Human LIGHT/CD258 Rabbit RecAb (CL647-98063, Clone: 240694D7) (black, dashed). Cells were