

For Research Use Only

CoraLite® Plus 647 Anti-Mouse VCAM-1/CD106 Rabbit Recombinant Antibody

Catalog Number: CL647-98059



Basic Information

| | | |
|--|--|---|
| Catalog Number: CL647-98059 | GenBank Accession Number: CAA47989.1 | Purification Method: Protein A purification |
| Concentration: 100ug, 500 ug/ml | GeneID (NCBI): 22329 | CloneNo.: 240597C2 |
| Source: Rabbit | UNIPROT ID: P29533 | Recommended Dilutions: FC: 0.25 ug per 10 ⁶ cells in a 100 µl suspension |
| Isotype: IgG | Full Name: vascular cell adhesion molecule 1 | Excitation/Emission maxima wavelengths: 654 nm / 674 nm |
| Immunogen Catalog Number: EG0639 | Calculated MW: 81 kDa | |

Applications

| | |
|--------------------------------------|--|
| Tested Applications: FC | Positive Controls: FC : mouse bone marrow cells, |
| Species Specificity: mouse | |

Background Information

Vascular cell adhesion molecule 1 (VCAM1), also known as CD106, is a 110-kDa transmembrane glycoprotein belonging to the immunoglobulin gene superfamily. VCAM1 is expressed by cytokine-activated endothelium, interacts with integrin VLA4 (α₄β₁) present on the surface of leukocytes, and mediates both adhesion and signal transduction. It is also expressed either constitutively or inducibly in a variety of other cell types, including vascular smooth muscle cells, differentiating skeletal muscle cells, renal and neural epithelial cells, macrophages (Kupffer cells), dendritic cells, and bone marrow stromal cells (PMID: 7507076, 11359843).

Storage

Storage:
Store at 2-8°C. Avoid exposure to light. Stable for one year after shipment.
Storage Buffer:
PBS with 0.09% sodium azide, pH7.3

For technical support and original validation data for this product please contact:

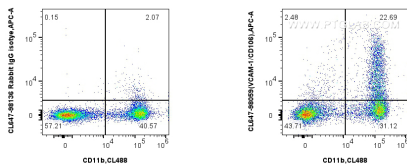
T: 4006900926

E: Proteintech-CN@ptglab.com

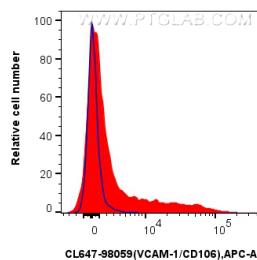
W: ptgcn.com

This product is exclusively available under Proteintech Group brand and is not available to purchase from any other manufacturer.

Selected Validation Data



1x10⁶ mouse bone marrow cells were surface stained with CoraLite® Plus 750 Anti-Mouse CD11b, and 0.25 ug CoraLite® 647 Anti-Mouse VCAM-1/CD106 Rabbit RecAb (CL647-98059, Clone: 240597C2) or CoraLite® 594 Rabbit IgG Isotype Control RecAb (CL647-98136, Clone: 240953C9). Cells were not fixed.



1x10⁶ mouse bone marrow cells were surface stained with 0.25 ug CoraLite® Plus 647 Anti-Mouse VCAM-1/CD106 Rabbit RecAb (CL647-98059, Clone: 240597C2) (red) or 0.25 ug CoraLite® Plus 647 Rabbit IgG Isotype Control RecAb (CL647-98136, Clone: 240953C9). Cells were not fixed.