

For Research Use Only

CoraLite® Plus 647 Anti-Mouse IL-1 alpha Rabbit Recombinant Antibody

Catalog Number: CL647-98052



Basic Information

Catalog Number: CL647-98052	GenBank Accession Number: NM_010554	Purification Method: Protein A purification
Concentration: 100ug, 500 ug/ml	GeneID (NCBI): 16175	CloneNo.: 240431G10
Source: Rabbit	UNIPROT ID: P01582	Recommended Dilutions: FC (Intra): 0.25 ug per 10 ⁶ cells in a 100 µl suspension
Isotype: IgG	Full Name: interleukin 1 alpha	Excitation/Emission maxima wavelengths: 654 nm / 674 nm
Immunogen Catalog Number: EG0263	Calculated MW: 31kd	

Applications

Tested Applications: FC (Intra)	Positive Controls: FC (Intra) : LPS treated RAW 264.7 cells,
Species Specificity: mouse	

Background Information

IL-1 alpha is a dual function cytokine that can function both as a transcription factor and a damage-associated molecular pattern (DAMP) in innate immune responses. It is expressed by many cell types and its expression is increased when cells are exposed to growth factors, pro-inflammatory, and stress-related signals. In its pro-form, IL-1 alpha contains a nuclear localization signal that allows it to translocate to the nucleus and bind to DNA, resulting in either the increase or prohibition of pro-inflammatory cytokine expression. When cells are exposed to necrotic signals, mature IL-1 alpha is released from the cell lysates and triggers a strong pro-inflammatory response upon binding to its receptor on nearby cells. Due to its strongly pro-inflammatory nature, IL-1 alpha has been linked to tumor metastasis and lower median survival in several cancers (PMID: 27434011, 29247995).

Storage

Storage:
Store at 2-8°C. Avoid exposure to light. Stable for one year after shipment.
Storage Buffer:
PBS with 0.09% sodium azide, pH7.3

For technical support and original validation data for this product please contact:

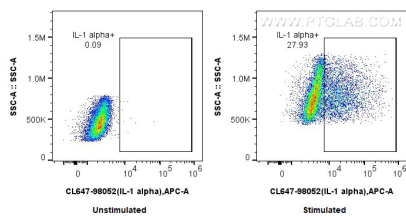
T: 4006900926

E: Proteintech-CN@ptglab.com

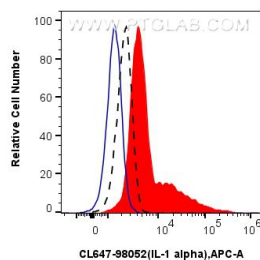
W: ptgcn.com

This product is exclusively available under Proteintech Group brand and is not available to purchase from any other manufacturer.

Selected Validation Data



1x10⁶ untreated or LPS-treated RAW 264.7 cells were intracellularly stained with 0.25 ug CoraLite® Plus 647 Anti-Mouse IL-1 alpha Rabbit RecAb (CL647-98052, Clone: 240431G10). Cells were fixed and permeabilized with True-Nuclear Transcription Factor Buffer Set.



1x10⁶ LPS-treated RAW 264.7 cells were intracellularly stained with 0.25 ug CoraLite® Plus 647 Anti-Mouse IL-1 alpha Rabbit RecAb (CL647-98052, Clone: 240431G10) (red) or 0.25 ug CoraLite® Plus 647 Rabbit IgG Isotype Control RecAb (CL647-98136, Clone: 240953C9) (blue). 1x10⁶ untreated RAW 264.7 cells were intracellularly stained with 0.25 ug CoraLite® Plus 647 Anti-Mouse IL-1 alpha Rabbit RecAb (CL647-98052, Clone: 240431G10)(black, dashed). Cells were fixed