

For Research Use Only

CoraLite® Plus 647 Anti-Human CD138/Syndecan-1 Rabbit Recombinant Antibody

Catalog Number: CL647-98051



Basic Information

Catalog Number:

CL647-98051

Size:

100tests, 5 ul/test

Source:

Rabbit

Isotype:

IgG

GenBank Accession Number:

BC008765

GeneID (NCBI):

6382

UNIPROT ID:

P18827

Full Name:

syndecan 1

Calculated MW:

32.5 kDa

Purification Method:

Protein A purification

CloneNo.:

240422C4

Excitation/Emission maxima
wavelengths:

654 nm / 674 nm

Applications

Tested Applications:

FC

Species Specificity:

human

Background Information

CD138, also named as Syndecan-1 (SDC1), is an integral membrane protein. It participates in cell proliferation, cell migration and cell-matrix interactions via its receptor for extracellular matrix proteins. It is a heparan sulfate proteoglycan expressed on the surface of, and actively shed by, myeloma cells. Altered syndecan-1 expression has been detected in several different tumor types. CD138 was regarded as a useful marker for labeling normal and neoplastic plasma cells and plasmacytoid lymphomas.

Storage

Storage:

Store at 2-8°C. Avoid exposure to light. Stable for one year after shipment.

Storage Buffer:

PBS with 0.09% sodium azide.

For technical support and original validation data for this product please contact:

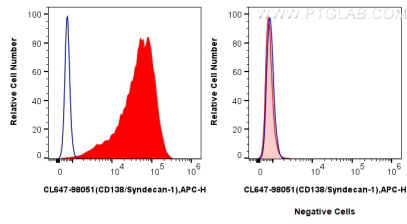
T: 4006900926

E: Proteintech-CN@ptglab.com

W: ptgcn.com

This product is exclusively available under Proteintech Group brand and is not available to purchase from any other manufacturer.

Selected Validation Data



1x10⁶ U266 cells (left) or Jurkat cells (right) were surface stained with 0.25 ug CoraLite® Plus 647 Anti-Human CD138/Syndecan-1 Rabbit RecAb (CL647-98051, Clone:240422C4) (red), or CoraLite® Plus 647 Rabbit IgG Isotype Control RecAb (CL647-98136, Clone: 240953C9) (blue). Cells were not fixed.