

For Research Use Only

CoraLite® Plus 647 Anti-Human CD14 Rabbit Recombinant Antibody

Catalog Number: CL647-98040



Basic Information

Catalog Number:

CL647-98040

Concentration:

100 tests, 5 µl/test

Source:

Rabbit

Isotype:

IgG

GenBank Accession Number:

BC010507

GeneID (NCBI):

929

ENSEMBL Gene ID:

ENSG00000170458

UNIPROT ID:

P08571

Full Name:

CD14 molecule

Calculated MW:

375 aa, 40 kDa

Purification Method:

Protein A purification

CloneNo.:

230332D7

Excitation/Emission maxima

wavelengths:

654 nm / 674 nm

Applications

Tested Applications:

FC

Species Specificity:

human

Background Information

CD14 is a 50-55 kDa glycosylphosphatidylinositol-anchored glycoprotein preferentially expressed on monocytes and macrophages, and at lower levels on granulocytes (PMID: 3385210; 2462937; 7685797). CD14 can also exist as a soluble protein. CD14 acts as a co-receptor for bacterial liposaccharides (LPS) (PMID: 1698311). It plays a major role in the inflammatory response of monocytes to LPS.

Storage

Storage:

Store at 2-8°C. Avoid exposure to light. Stable for one year after shipment.

Storage Buffer:

PBS with 0.09% sodium azide and 0.5% BSA.

For technical support and original validation data for this product please contact:

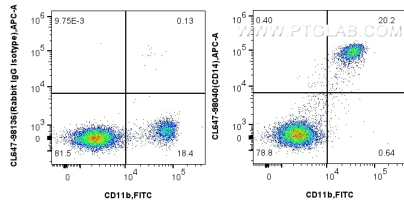
T: 4006900926

E: Proteintech-CN@ptglab.com

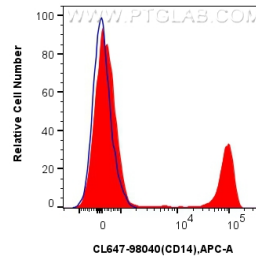
W: ptgcn.com

This product is exclusively available under Proteintech Group brand and is not available to purchase from any other manufacturer.

Selected Validation Data



1x10⁶ human PBMCs were surface stained with FITC Plus Anti-Human CD11b and 5 ul CoraLite® Plus 647 Anti-Human CD14 Rabbit Recombinant Antibody (CL647-98040, Clone: 230332D7) or CoraLite® Plus 647 Rabbit IgG Isotype Control Recombinant Antibody (CL647-98136, Clone: 240953C9). Cells were incubated with FC Receptor Block prior to staining. Cells were not fixed.



1x10⁶ human PBMCs were surface stained with 5 ul CoraLite® Plus 647 Anti-Human CD14 Rabbit Recombinant Antibody (CL647-98040, Clone:230332D7) (red) or CoraLite® Plus 647 Rabbit IgG Isotype Control Recombinant Antibody (CL647-98136, Clone: 240953C9) (blue). Cells were incubated with FC Receptor Block prior to staining. Cells were not fixed.