

For Research Use Only

CoraLite® Plus 647-conjugated AQP2 Recombinant monoclonal antibody

Catalog Number: CL647-85402



Basic Information

Catalog Number:

CL647-85402

Source:

Rabbit

Isotype:

IgG

Immunogen Catalog Number:

AG29931

GenBank Accession Number:

NM_000486

GeneID (NCBI):

359

UNIPROT ID:

P41181

Full Name:

aquaporin 2 (collecting duct)

Calculated MW:

29 kDa

Observed MW:

28-29 kDa, 35-38 kDa

Purification Method:

Protein A purification

CloneNo.:

242886B8

Recommended Dilutions:

IF-P: 1:50-1:500

Excitation/Emission maxima
wavelengths:

654 nm / 674 nm

Applications

Tested Applications:

IF-P

Species Specificity:

human, mouse

Positive Controls:

IF-P: mouse kidney tissue,

Background Information

AQP2 (Aquaporin2) is a water channel protein that is widely distributed among mammalian tissues and plays a major role in water homeostasis. AQP2 is mainly found in the apical cell membranes of the kidney's collecting duct cells and is critical for urinary concentration. AQP2 can be glycosylated and this antibody recognizes the 28-29 kDa non-glycosylated as well as the 35-40 kDa glycosylated forms of AQP2.

Storage

Storage:

Store at -20°C. Avoid exposure to light. Stable for one year after shipment.

Storage Buffer:

PBS with 50% glycerol, 0.05% Proclin300, 0.5% BSA, pH7.3

Aliquoting is unnecessary for -20°C storage

For technical support and original validation data for this product please contact:

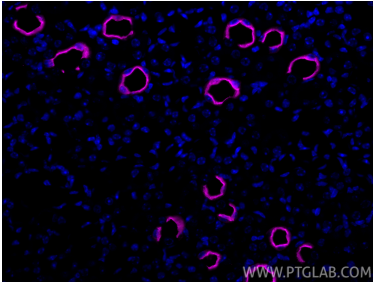
T: 4006900926

E: Proteintech-CN@ptglab.com

W: ptgcn.com

This product is exclusively available under Proteintech Group brand and is not available to purchase from any other manufacturer.

Selected Validation Data



Immunofluorescent analysis of (4% PFA) fixed paraffin-embedded mouse kidney tissue using CoraLite® Plus 647 AQP2 antibody (CL647-85402, Clone: 242886B8) at dilution of 1:200. Heat mediated antigen retrieval with Tris-EDTA buffer (pH 9.0).