

For Research Use Only

# CoraLite® Plus 647-conjugated RECQL Recombinant antibody

Catalog Number: CL647-85024-6



## Basic Information

Catalog Number:

CL647-85024-6

Concentration:

1000 ug/ml

Source:

Rabbit

Isotype:

IgG

Immunogen Catalog Number:

AG6834

GenBank Accession Number:

BC001052

GeneID (NCBI):

5965

UNIPROT ID:

P46063

Full Name:

RecQ protein-like (DNA helicase Q1-like)

Calculated MW:

73 kDa

Purification Method:

Protein A purification

CloneNo.:

242577F1

Recommended Dilutions:

IF/ICC: 1:50-1:500

Excitation/Emission maxima wavelengths:

654 nm / 674 nm

## Applications

Tested Applications:

IF/ICC

Species Specificity:

human

Positive Controls:

IF/ICC : HeLa cells,

## Background Information

RECQL, also known as RecQ-like helicase, is a member of the RecQ DNA helicase family. These enzymes play a crucial role in maintaining genomic integrity by participating in various DNA repair processes, including mismatch repair, nucleotide excision repair, and direct repair. It's reported that the low RECQL expression is strongly associated with poor prognosis in breast cancer. RECQL expression may be a useful marker in estimating the prognosis of breast cancer patients. (PMID: 29914420)

## Storage

Storage:

Store at -20°C. Avoid exposure to light. Stable for one year after shipment.

Storage Buffer:

PBS with 50% glycerol, 0.05% Proclin300, 0.5% BSA, pH7.3

Aliquoting is unnecessary for -20°C storage

For technical support and original validation data for this product please contact:

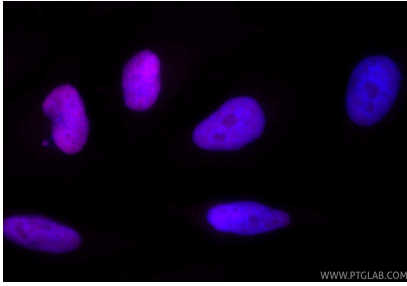
T: 4006900926

E: [Proteintech-CN@ptglab.com](mailto:Proteintech-CN@ptglab.com)

W: [ptgcn.com](http://ptgcn.com)

This product is exclusively available under Proteintech Group brand and is not available to purchase from any other manufacturer.

## Selected Validation Data



Immunofluorescent analysis of (4% PFA) fixed HeLa cells using CoraLite® Plus 647 RECQL antibody (CL647-85024-6, Clone: 242577F1 ) at dilution of 1:200.