

For Research Use Only

CoraLite® Plus 647-conjugated Phospho-EGFR (Tyr1197) Recombinant antibody

Catalog Number: CL647-84906



Basic Information

Catalog Number: CL647-84906	GenBank Accession Number: BC094761	Purification Method: Protein A purification
Concentration: 1000 ug/ml	GeneID (NCBI): 1956	CloneNo.: 241826G10
Source: Rabbit	UNIPROT ID: P00533	Recommended Dilutions: FC (Intra): 0.25 ug per 10 ⁶ cells in a 100 µl suspension
Isotype: IgG	Full Name: epidermal growth factor receptor (erythroblastic leukemia viral (v-erb- b) oncogene homolog, avian)	Excitation/Emission maxima wavelengths: 654 nm / 674 nm
	Calculated MW: 1210 aa, 134 kDa	
	Observed MW: 175 kDa	

Applications

Tested Applications: FC (Intra)	Positive Controls: FC (Intra) : EGF treated A431 cells,
Species Specificity: human	

Background Information

Epidermal Growth Factor Receptor (EGFR) is one of the receptor tyrosine kinases (RTKs), members of the ErbB/HER family which consists of ErbB1 (EGFR or HER1), ErbB2 (HER2 or Neu), ErbB3 (HER3), and ErbB4 (HER4). The EGFR autophosphorylation sites Tyr-992 and Tyr-1173 (also known as Tyr 1197) have been shown to play a critical role in the activation of the MAPK cascade following EGF stimulation. (PMID: 15708852)

Storage

Storage:
Store at -20°C. Avoid exposure to light. Stable for one year after shipment.
Storage Buffer:
PBS with 50% glycerol, 0.05% Proclin300, 0.5% BSA, pH7.3
Aliquoting is unnecessary for -20°C storage

For technical support and original validation data for this product please contact:

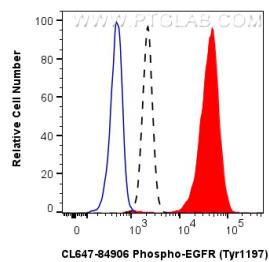
T: 4006900926

E: Proteintech-CN@ptglab.com

W: ptgcn.com

This product is exclusively available under Proteintech Group brand and is not available to purchase from any other manufacturer.

Selected Validation Data



1X10⁶ A431 cells untreated (dashed lines) or treated with EGF which intracellularly stained with 0.25 ug Coralite® Plus 647 Phospho-EGFR (Tyr1197) Recombinant Antibody (CL647-84906, Clone:241826G10)(red), or 0.25 ug Coralite® Plus 647 Rabbit IgG Isotype Control RecAb (CL647-98136, Clone: 240953C9) (blue). Cells were fixed with 4% PFA and permeabilized with 90% MeOH.