

For Research Use Only

CoraLite® Plus 647-conjugated ASGR1 Recombinant monoclonal antibody

Catalog Number: CL647-83691-3



Basic Information

Catalog Number:

CL647-83691-3

Source:

Rabbit

Isotype:

IgG

Immunogen Catalog Number:

EG0946

GenBank Accession Number:

NM_001671.4

GeneID (NCBI):

432

UNIPROT ID:

P07306-1

Full Name:

asialoglycoprotein receptor 1

Calculated MW:

33 kDa

Observed MW:

42-46 kDa

Purification Method:

Protein A purification

CloneNo.:

240672C4

Recommended Dilutions:

IF-P: 1:50-1:500

Excitation/Emission maxima
wavelengths:

654 nm / 674 nm

Applications

Tested Applications:

IF-P

Species Specificity:

human, rat

Positive Controls:

IF-P: rat liver tissue,

Background Information

Asialoglycoprotein receptor (ASGPR), also known as the hepatic galactose/N-acetylglucosamine (GlcNAc) receptor or Ashwell receptor, is a C-type lectin expressed exclusively in hepatic parenchymal cells. ASGPR consists of two subunits, a major subunit (ASGR1, HL-1) and a minor subunit (ASGR2, HL-2), and specifically recognizes terminal β -linked galactose or GlcNAc on circulating glycoproteins or cells. This receptor plays a critical role in serum glycoprotein homeostasis by mediating the endocytosis and lysosomal degradation of glycoproteins that contain terminal galactose or GlcNAc residues. ASGPR may facilitate hepatic infection by multiple viruses including hepatitis B, and is also a target for liver-specific drug delivery.

Storage

Storage:

Store at -20°C. Avoid exposure to light. Stable for one year after shipment.

Storage Buffer:

PBS with 50% glycerol, 0.05% Proclin300, 0.5% BSA, pH7.3

Aliquoting is unnecessary for -20°C storage

For technical support and original validation data for this product please contact:

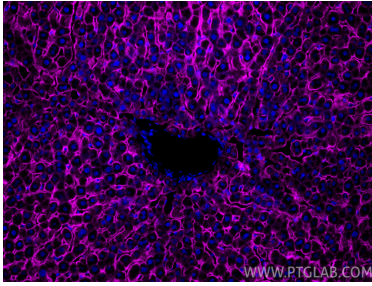
T: 4006900926

E: Proteintech-CN@ptglab.com

W: ptgcn.com

This product is exclusively available under Proteintech Group brand and is not available to purchase from any other manufacturer.

Selected Validation Data



Immunofluorescent analysis of (4% PFA) fixed paraffin-embedded rat liver tissue using CoraLite® Plus 647 ASGR1 antibody (CL647-83691-3, Clone: 240672C4) at dilution of 1:200. Heat mediated antigen retrieval with Tris-EDTA buffer (pH 9.0).